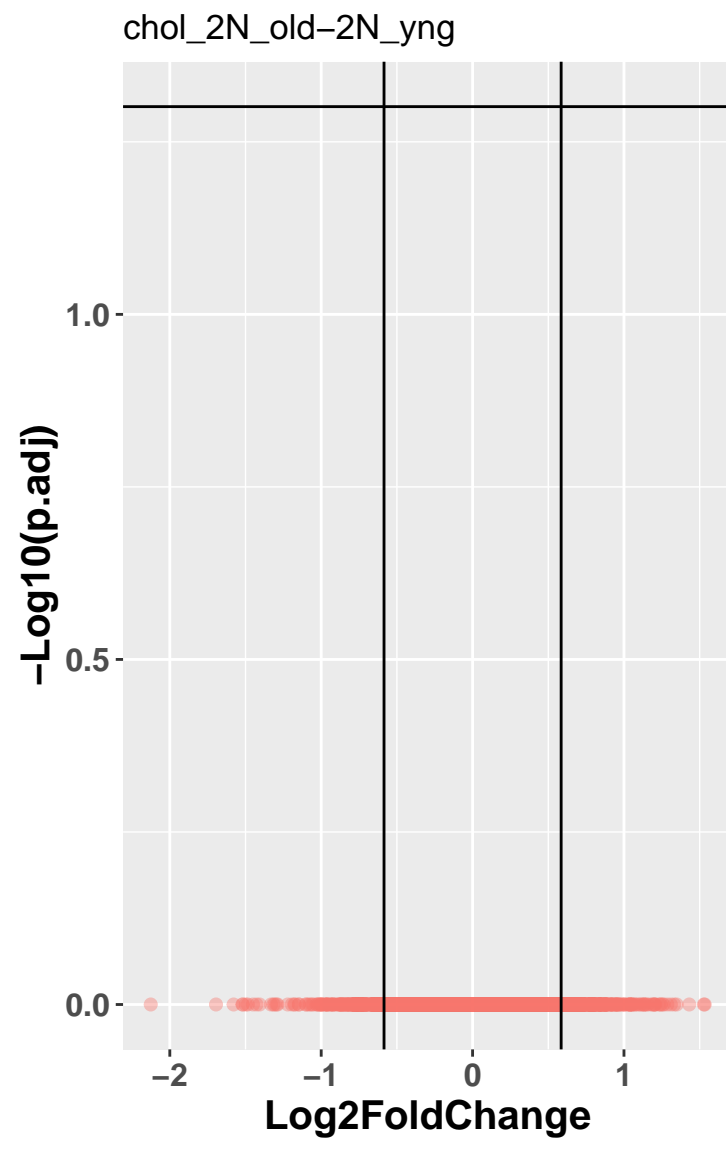
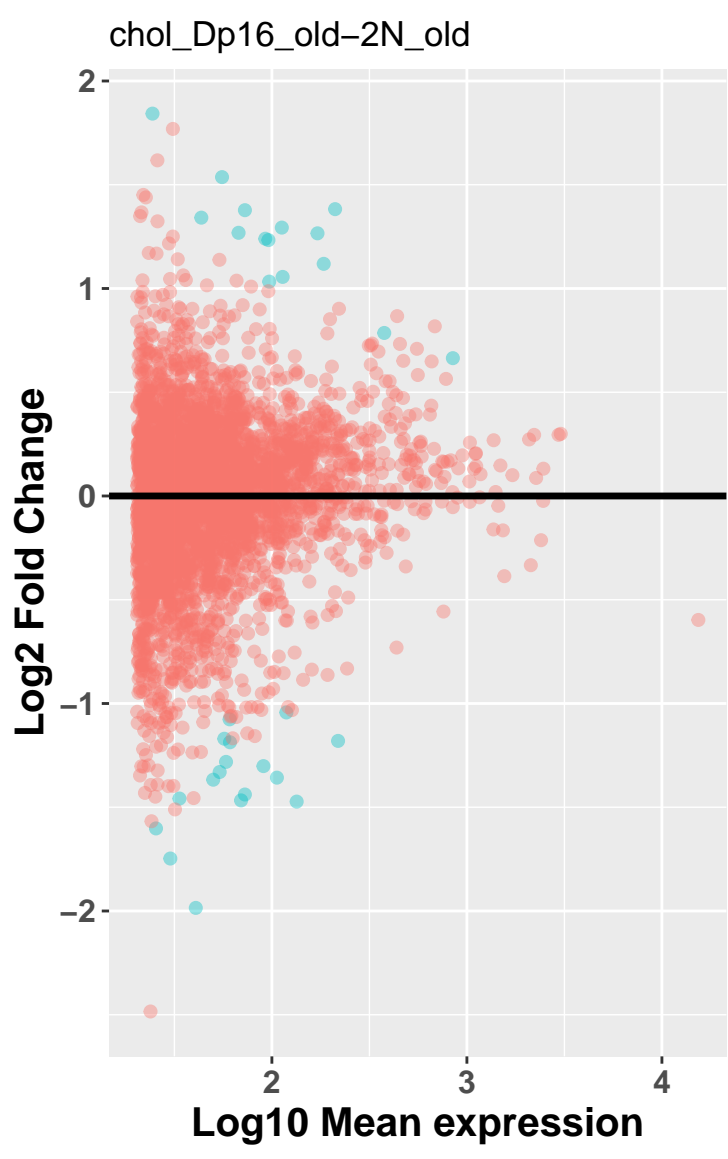


pass thresh
 ● FALSE

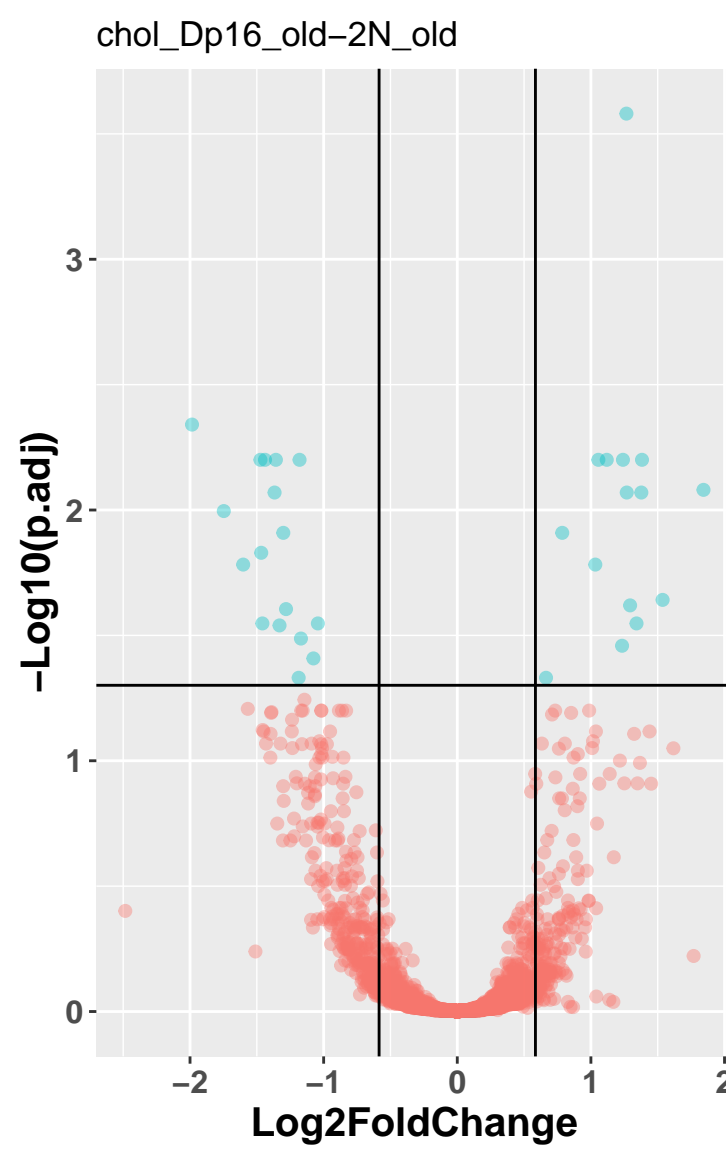


pass thresh
 ● FALSE

	Cut	Count
1	0.001	0
2	0.01	0
3	0.025	0
4	0.05	0
5	0.1	0
6	0.2	0
7	0.3	0
8	0.4	0
9	0.5	0

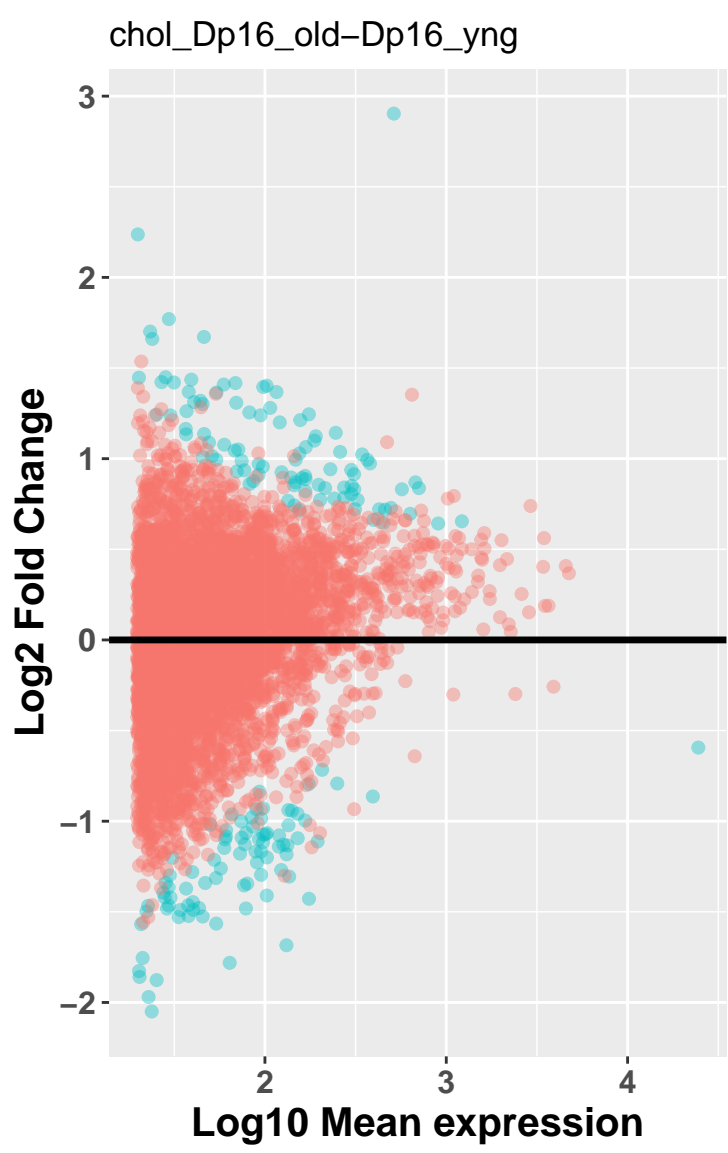


pass thresh
 ● FALSE
 ● TRUE

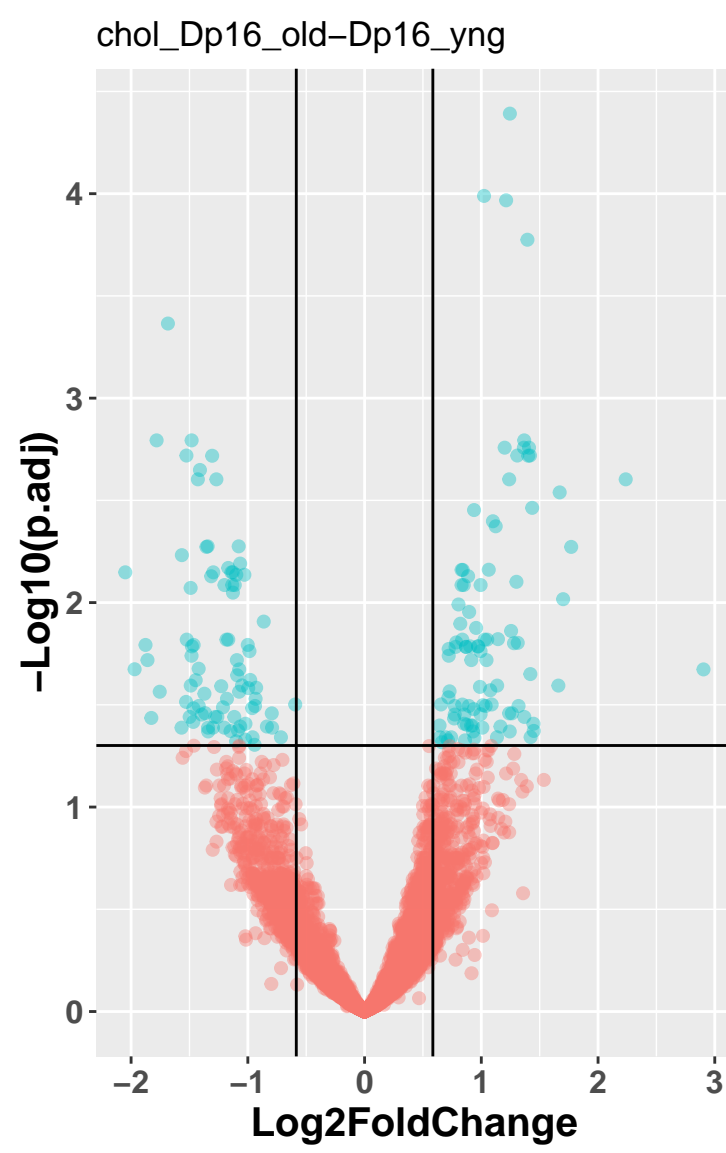


pass thresh
 ● FALSE
 ● TRUE

	Cut	Count
1	0.001	1
2	0.01	14
3	0.025	23
4	0.05	32
5	0.1	80
6	0.2	130
7	0.3	172
8	0.4	210
9	0.5	281

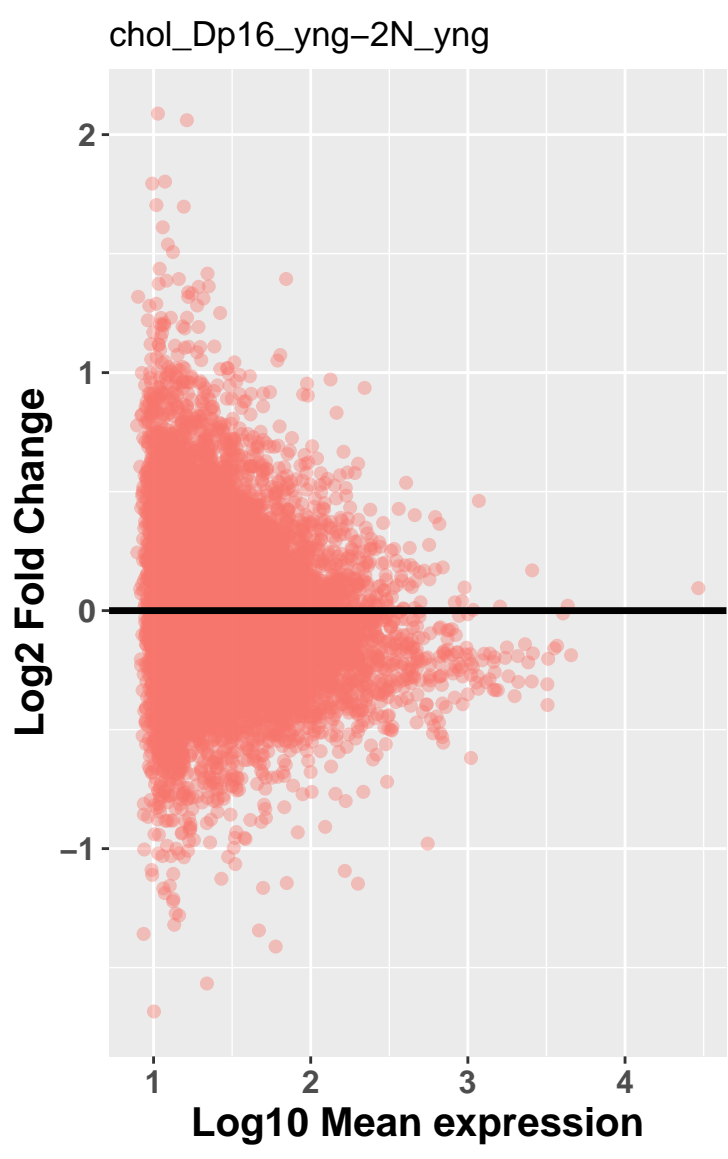


pass thresh
 ● FALSE
 ● TRUE

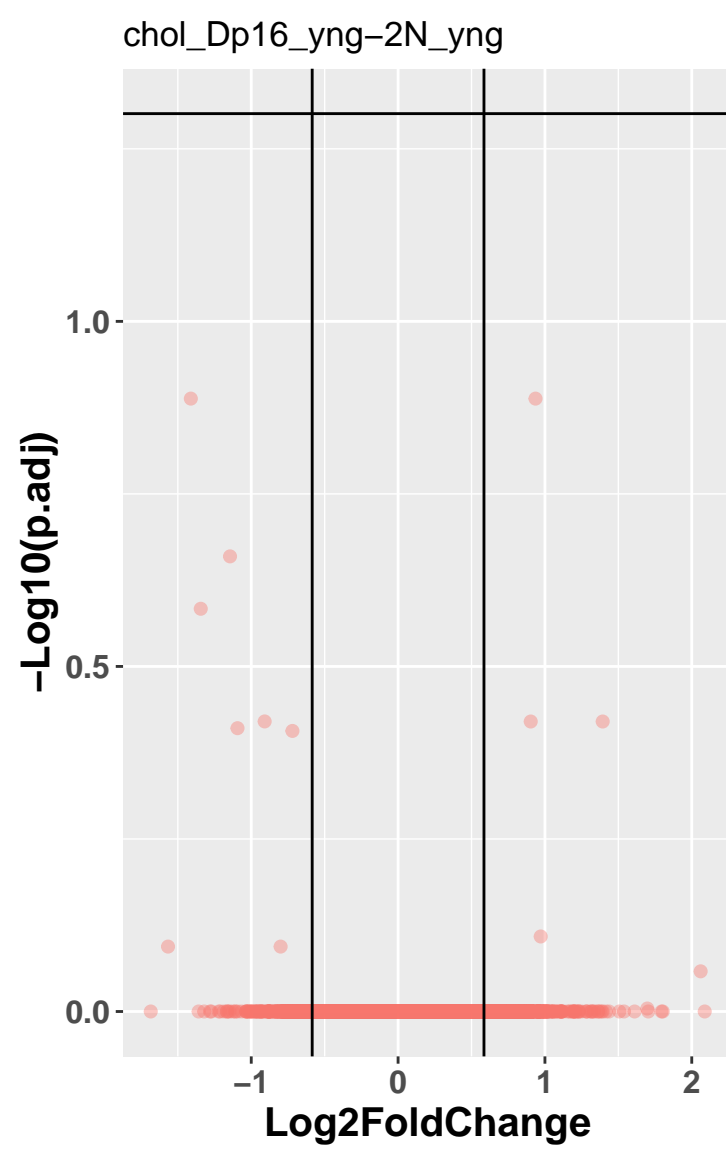


pass thresh
 ● FALSE
 ● TRUE

	Cut	Count
1	0.001	5
2	0.01	54
3	0.025	97
4	0.05	181
5	0.1	318
6	0.2	580
7	0.3	877
8	0.4	1031
9	0.5	1126



pass thresh
 ● FALSE



pass thresh
 ● FALSE

	Cut	Count
1	0.001	0
2	0.01	0
3	0.025	0
4	0.05	0
5	0.1	0
6	0.2	2
7	0.3	4
8	0.4	9
9	0.5	9