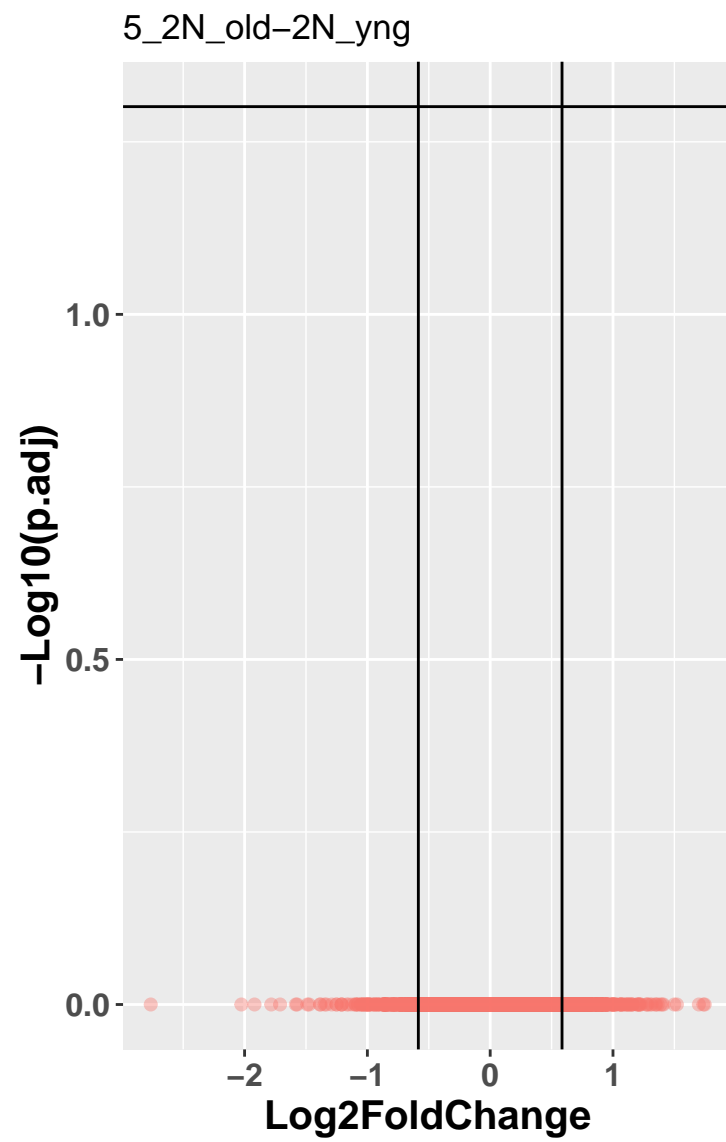




pass thresh
● FALSE

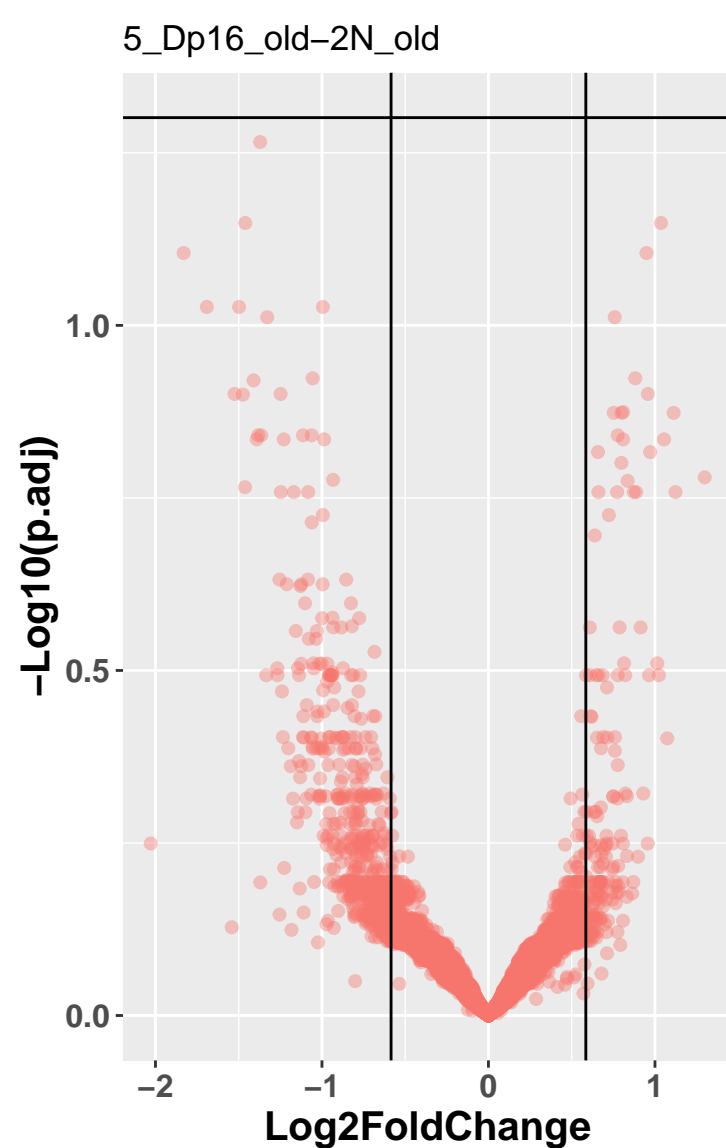


pass thresh
● FALSE

	Cut	Count
1	0.001	0
2	0.01	0
3	0.025	0
4	0.05	0
5	0.1	0
6	0.2	0
7	0.3	0
8	0.4	0
9	0.5	0

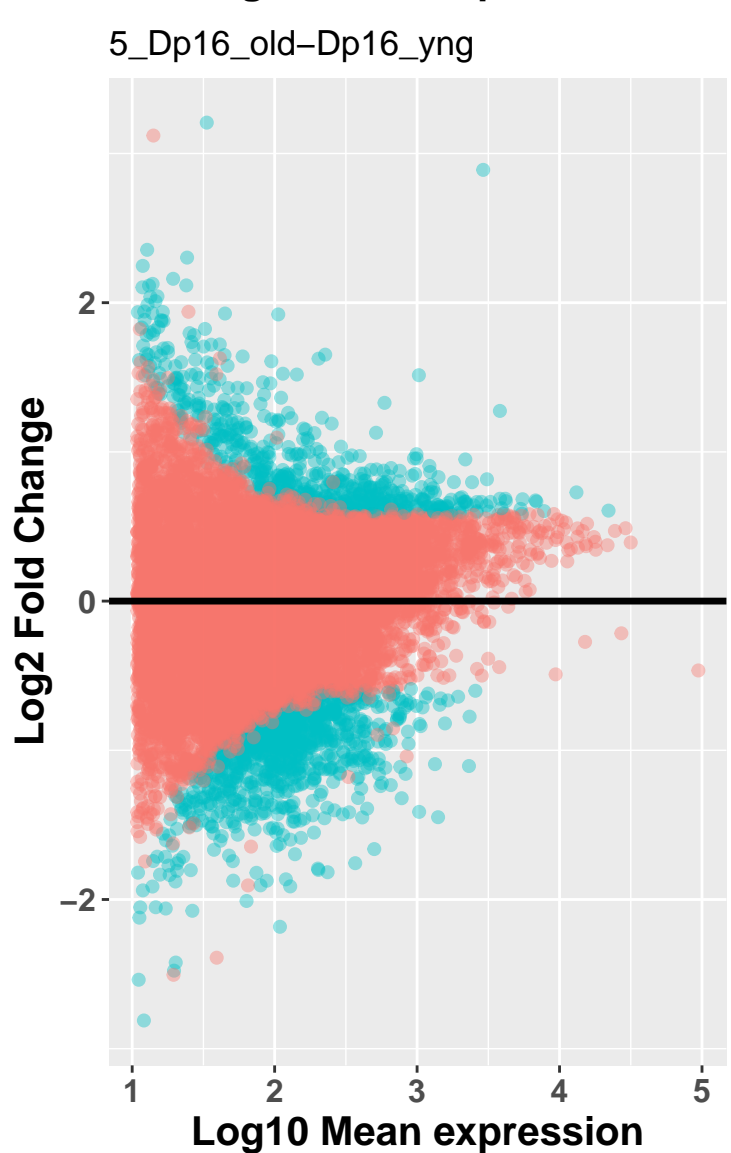


pass thresh
● FALSE

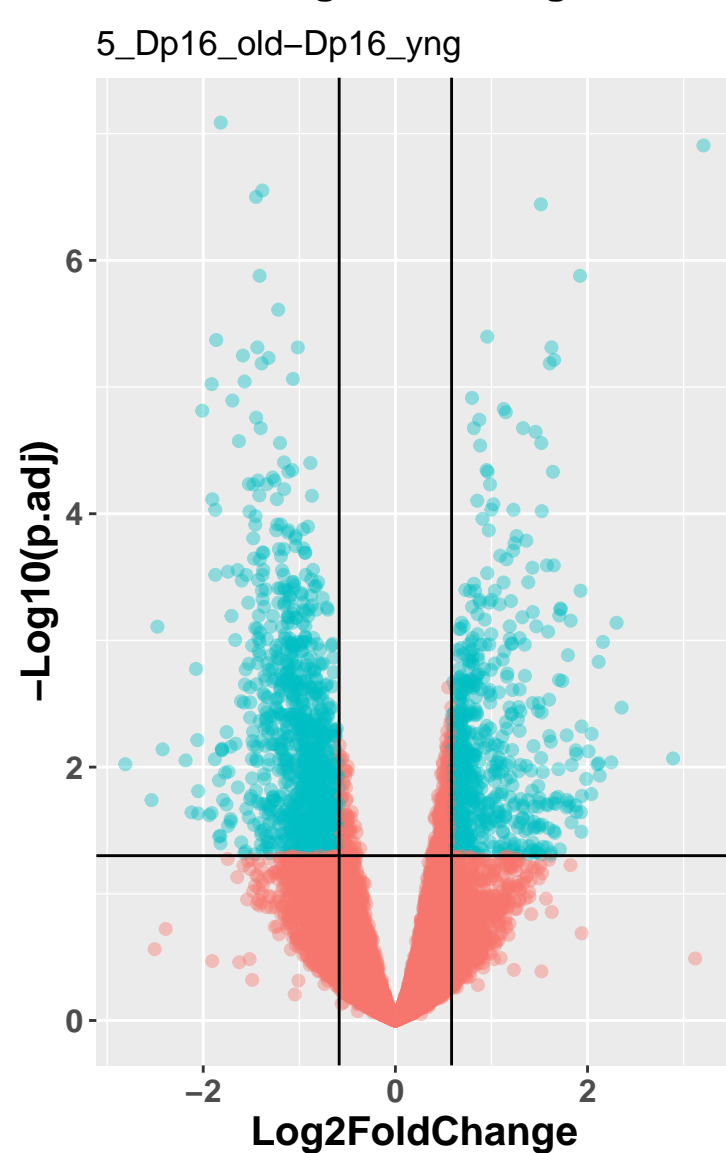


pass thresh
● FALSE

	Cut	Count
1	0.001	0
2	0.01	0
3	0.025	0
4	0.05	0
5	0.1	10
6	0.2	49
7	0.3	73
8	0.4	149
9	0.5	233

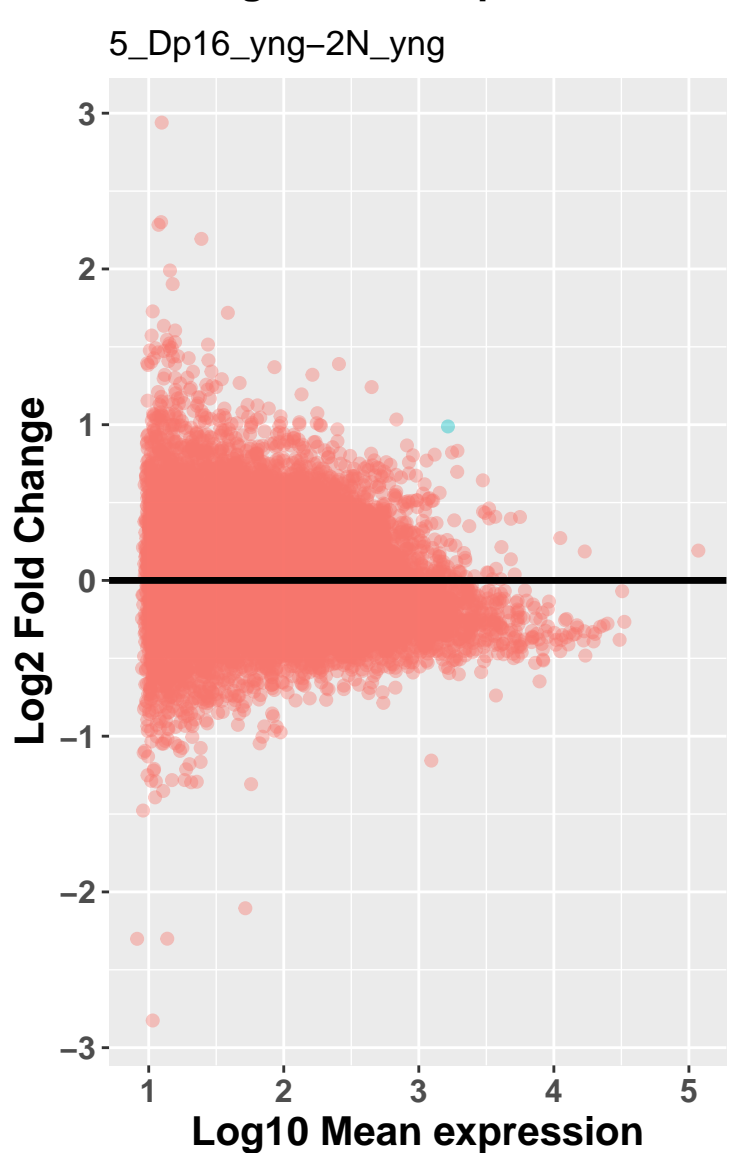


pass thresh
● FALSE
● TRUE

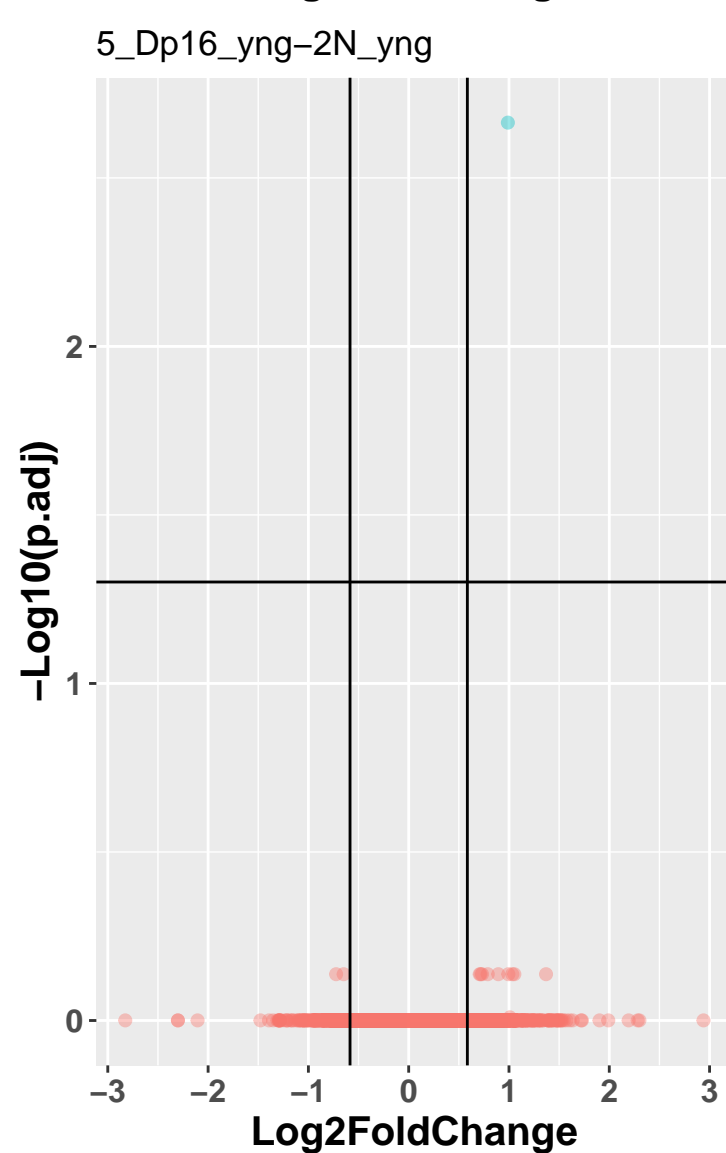


pass thresh
● FALSE
● TRUE

	Cut	Count
1	0.001	211
2	0.01	808
3	0.025	1248
4	0.05	1682
5	0.1	2215
6	0.2	2742
7	0.3	3065
8	0.4	3267
9	0.5	3354



pass thresh
● FALSE
● TRUE



pass thresh
● FALSE
● TRUE

	Cut	Count
1	0.001	0
2	0.01	1
3	0.025	1
4	0.05	1
5	0.1	1
6	0.2	1
7	0.3	1
8	0.4	1
9	0.5	1