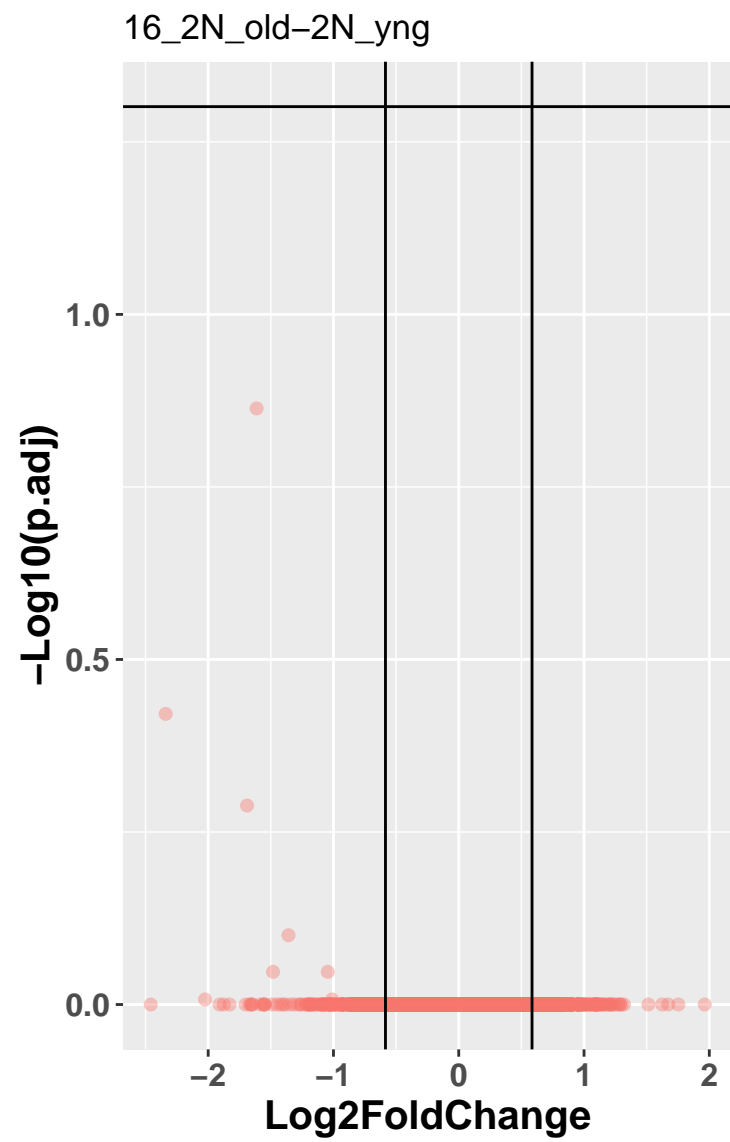
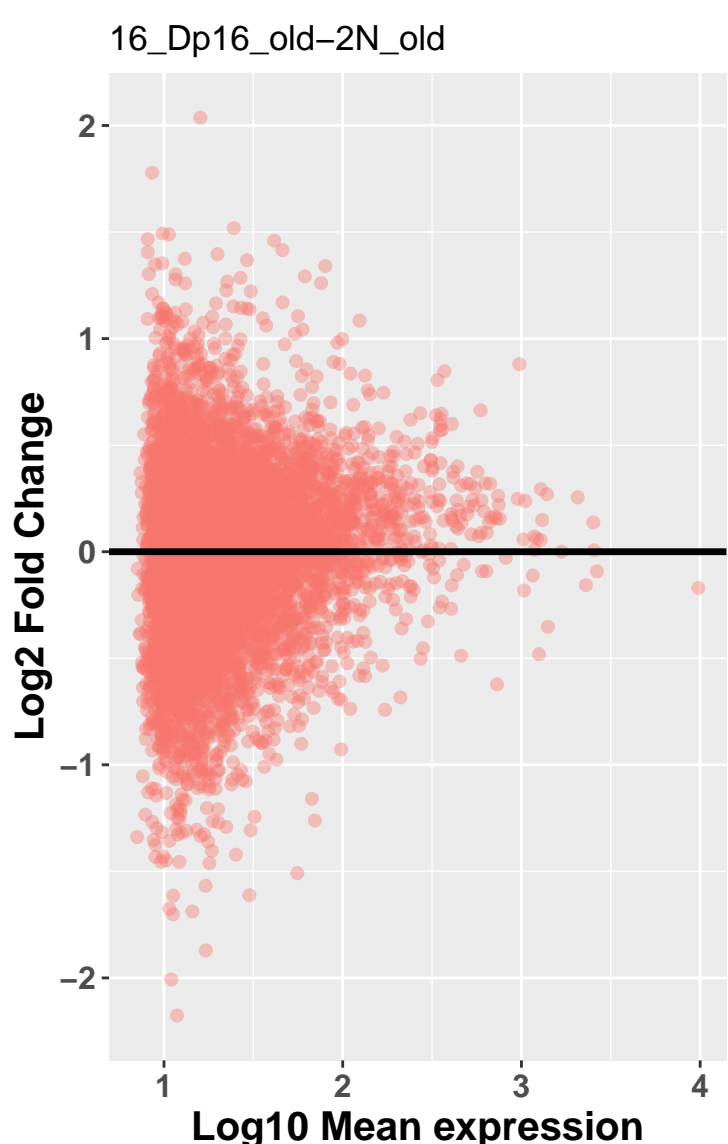


pass thresh
● FALSE

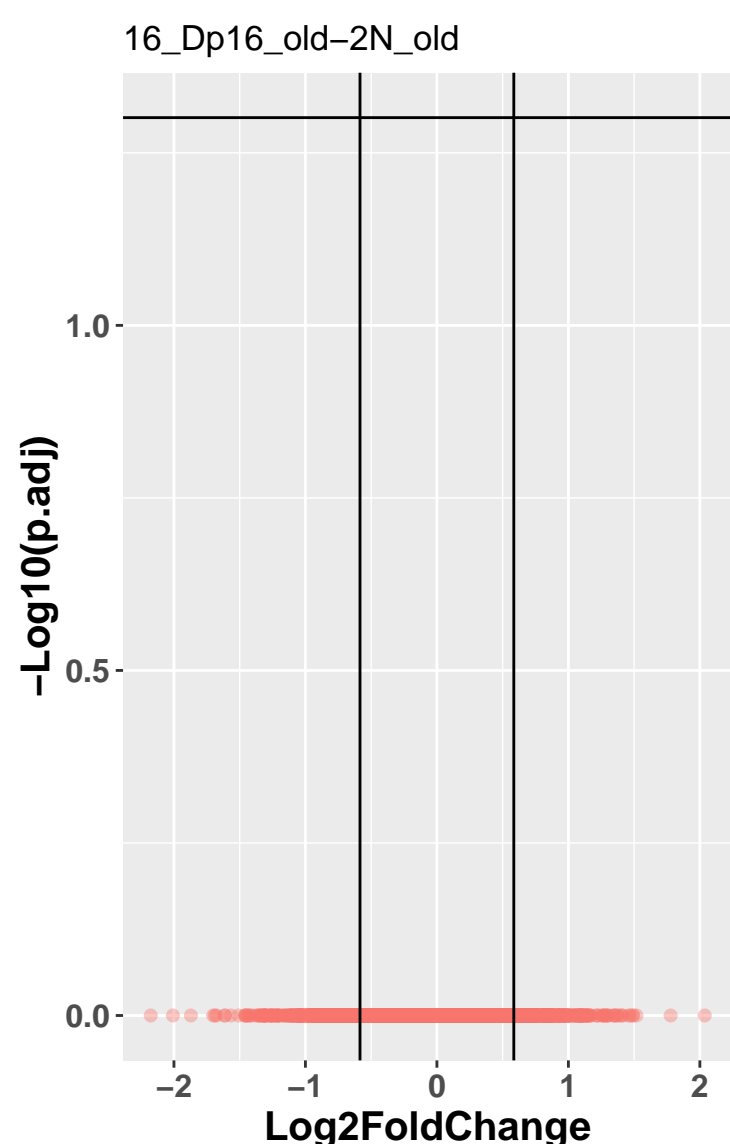


pass thresh
● FALSE

	Cut	Count
1	0.001	0
2	0.01	0
3	0.025	0
4	0.05	0
5	0.1	0
6	0.2	1
7	0.3	1
8	0.4	2
9	0.5	2

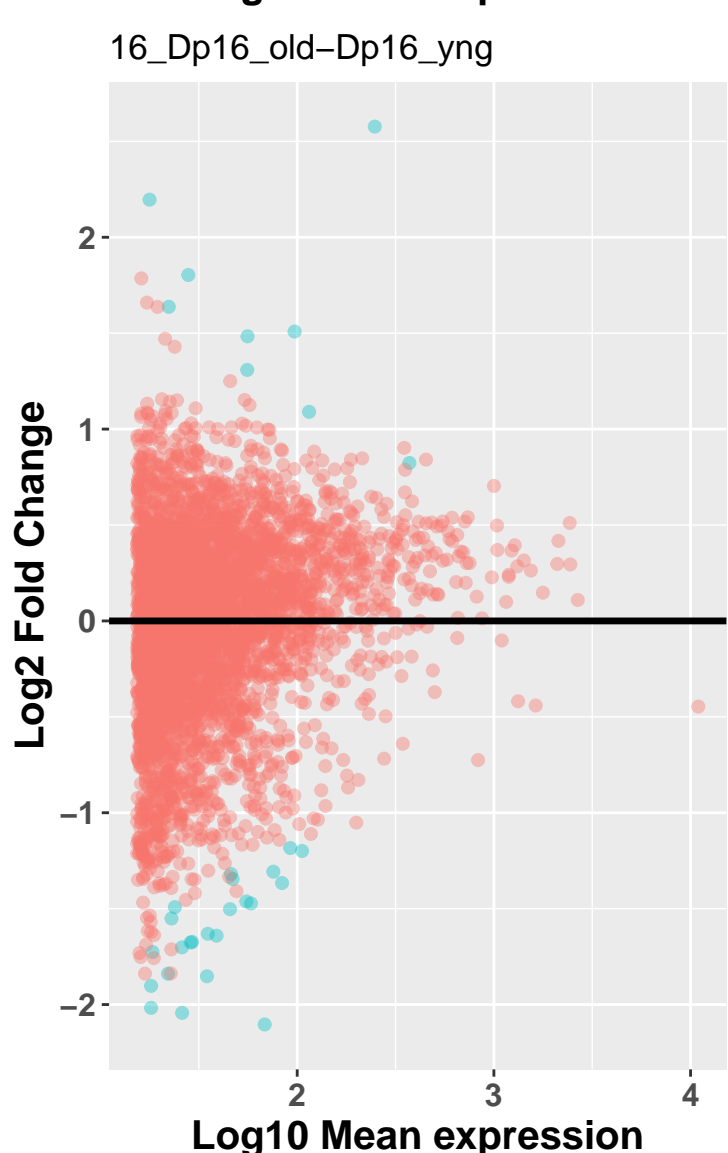


pass thresh
● FALSE

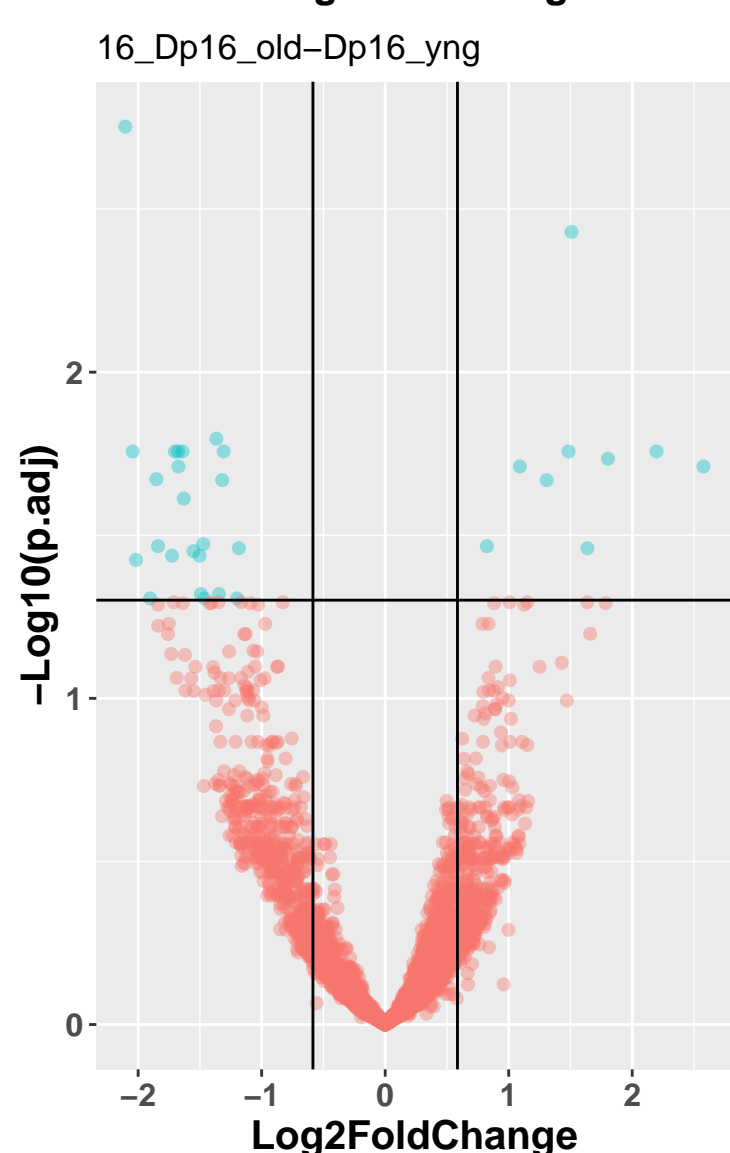


pass thresh
● FALSE

	Cut	Count
1	0.001	0
2	0.01	0
3	0.025	0
4	0.05	0
5	0.1	0
6	0.2	0
7	0.3	0
8	0.4	0
9	0.5	0

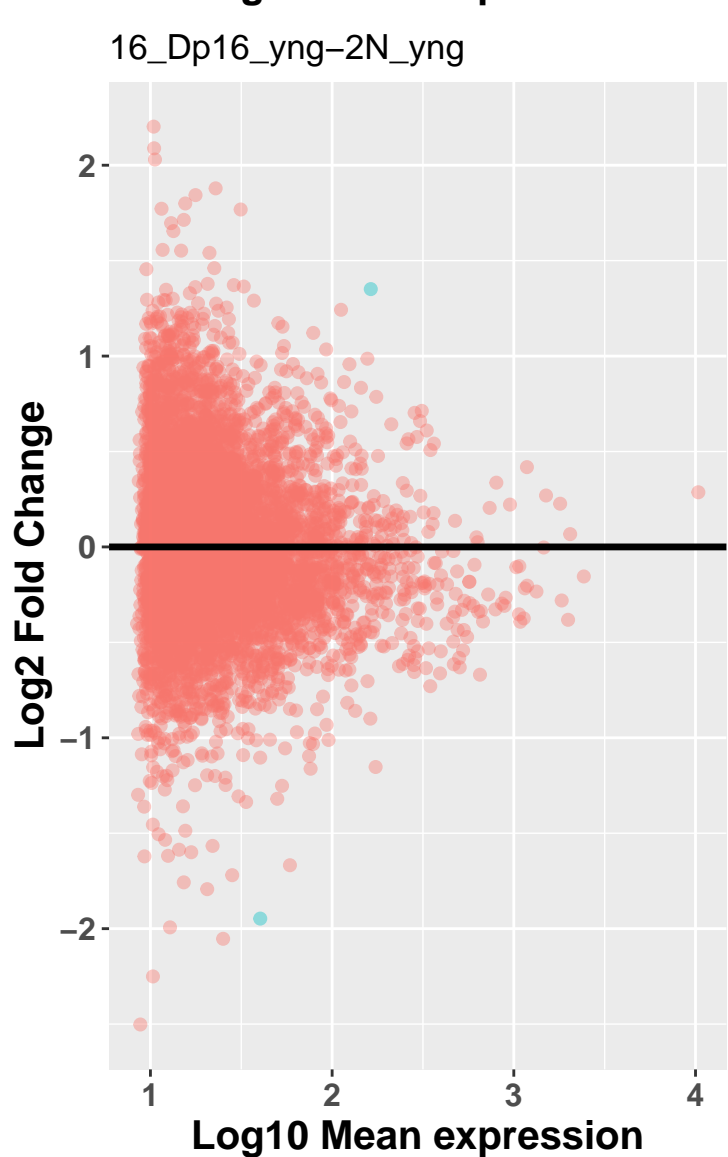


pass thresh
● FALSE
● TRUE

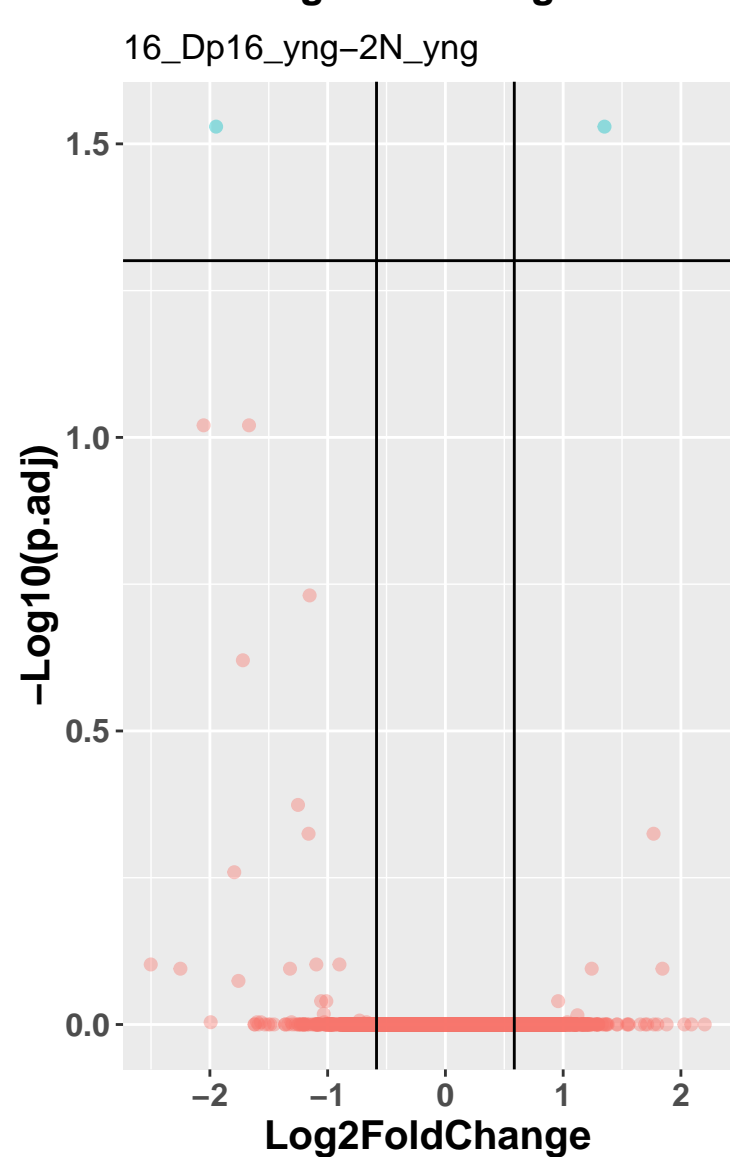


pass thresh
● FALSE
● TRUE

	Cut	Count
1	0.001	0
2	0.01	2
3	0.025	18
4	0.05	32
5	0.1	99
6	0.2	190
7	0.3	406
8	0.4	593
9	0.5	745



pass thresh
● FALSE
● TRUE



pass thresh
● FALSE
● TRUE

	Cut	Count
1	0.001	0
2	0.01	0
3	0.025	0
4	0.05	2
5	0.1	4
6	0.2	5
7	0.3	6
8	0.4	6
9	0.5	9