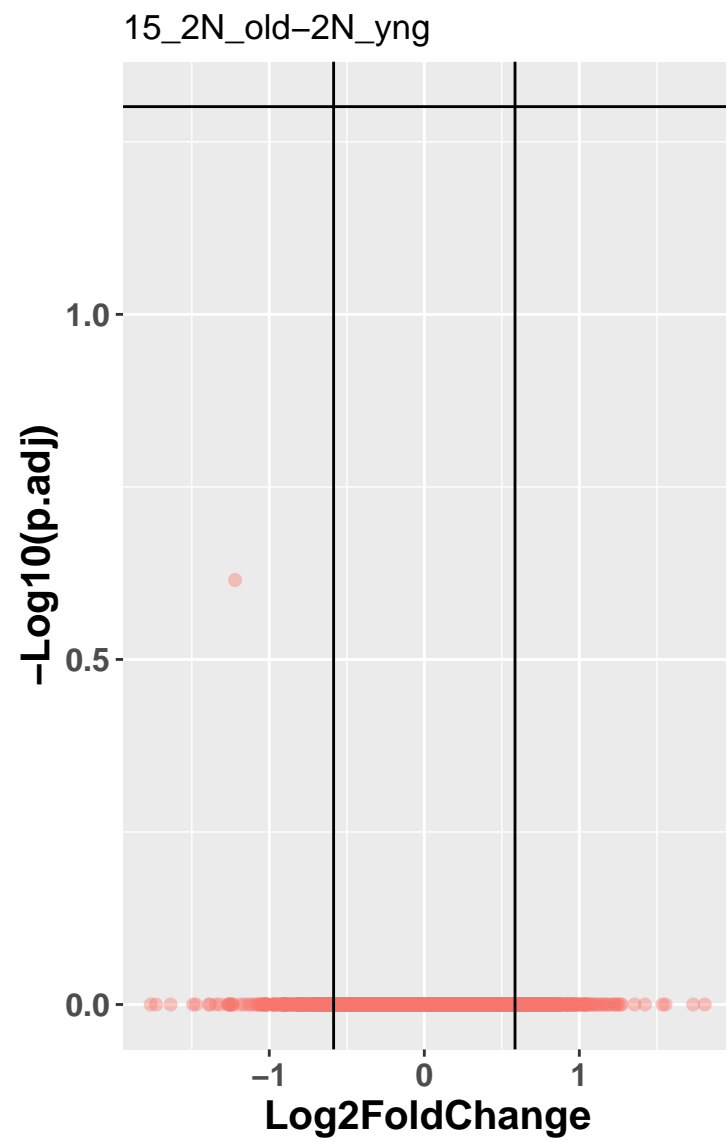
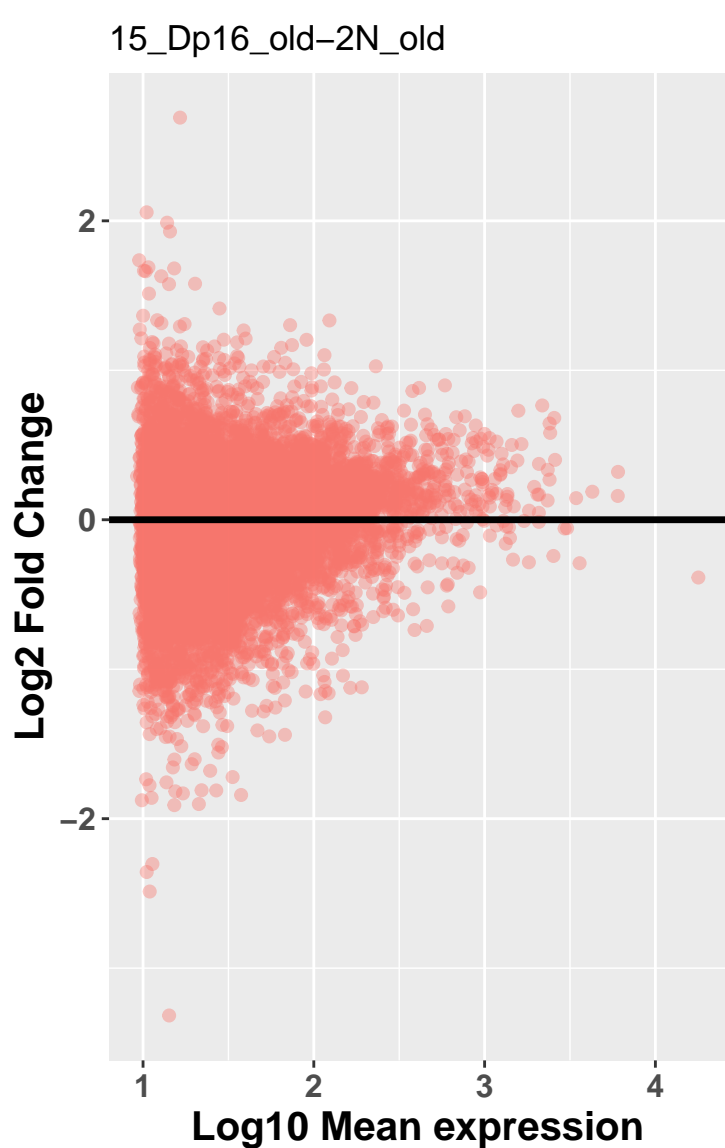


pass thresh
● FALSE

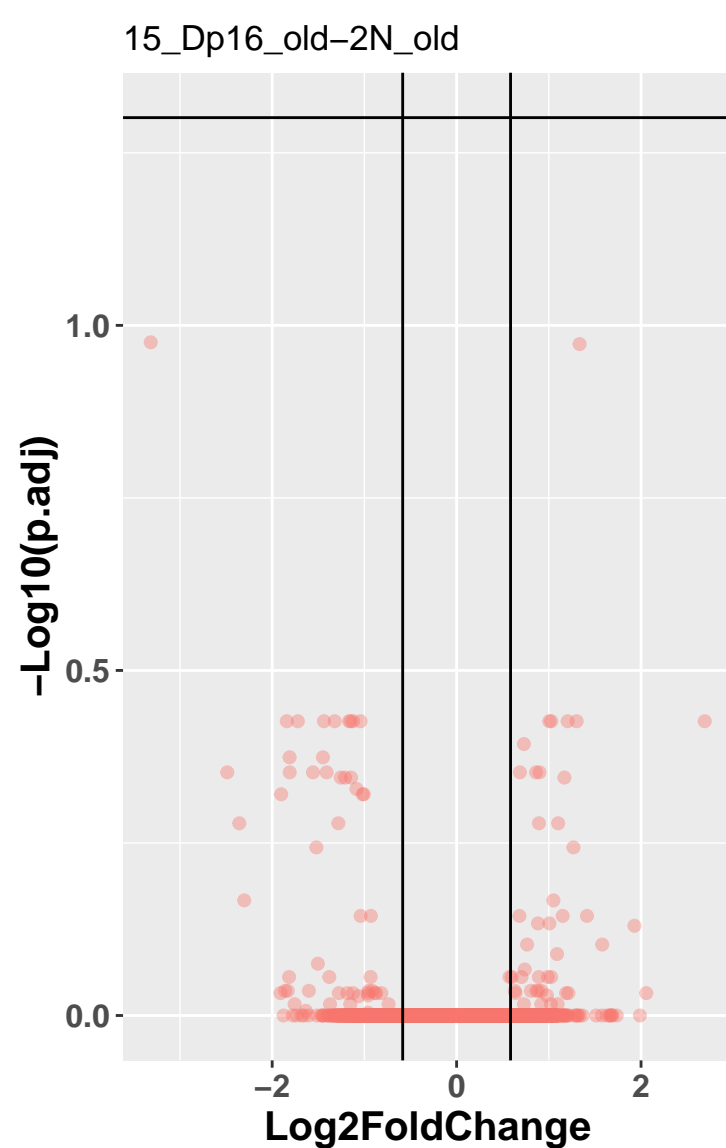


pass thresh
● FALSE

	Cut	Count
1	0.001	0
2	0.01	0
3	0.025	0
4	0.05	0
5	0.1	0
6	0.2	0
7	0.3	1
8	0.4	1
9	0.5	1

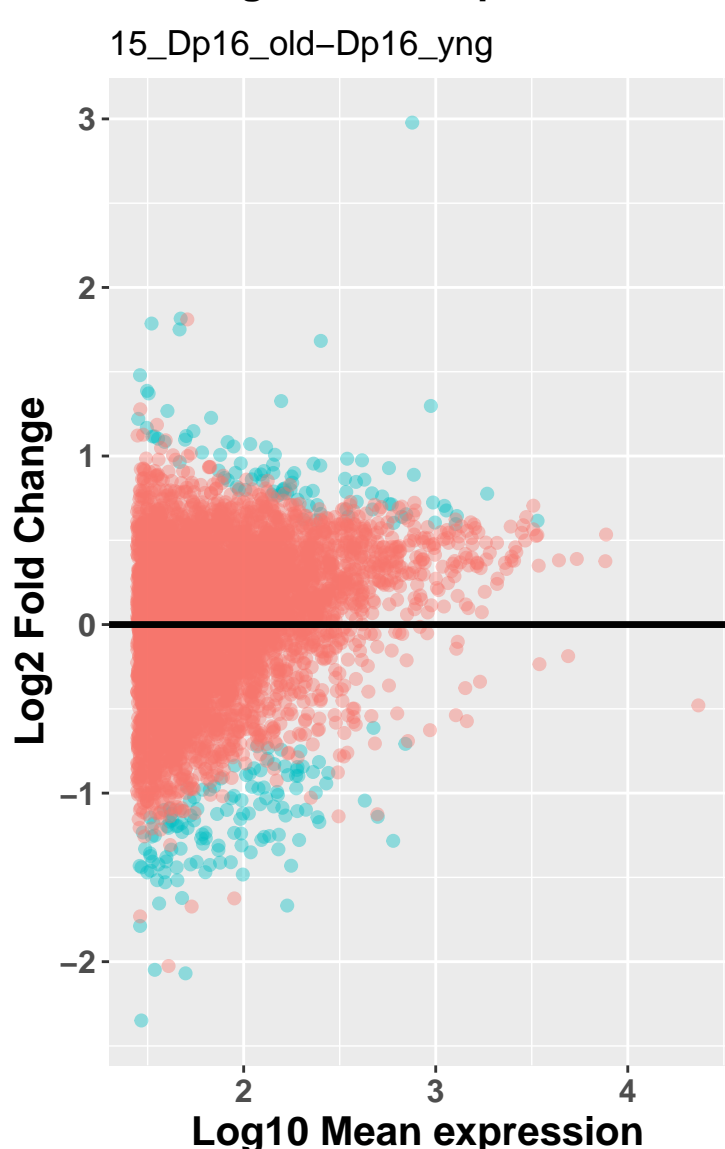


pass thresh
● FALSE

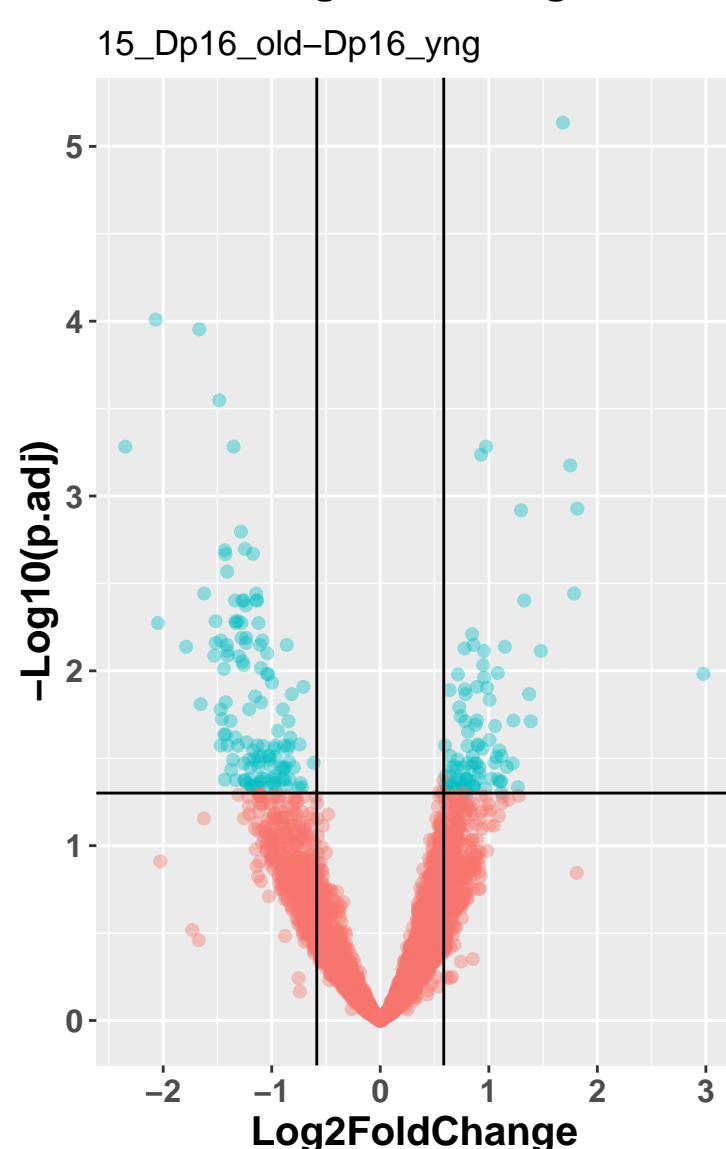


pass thresh
● FALSE

	Cut	Count
1	0.001	0
2	0.01	0
3	0.025	0
4	0.05	0
5	0.1	0
6	0.2	2
7	0.3	2
8	0.4	15
9	0.5	33

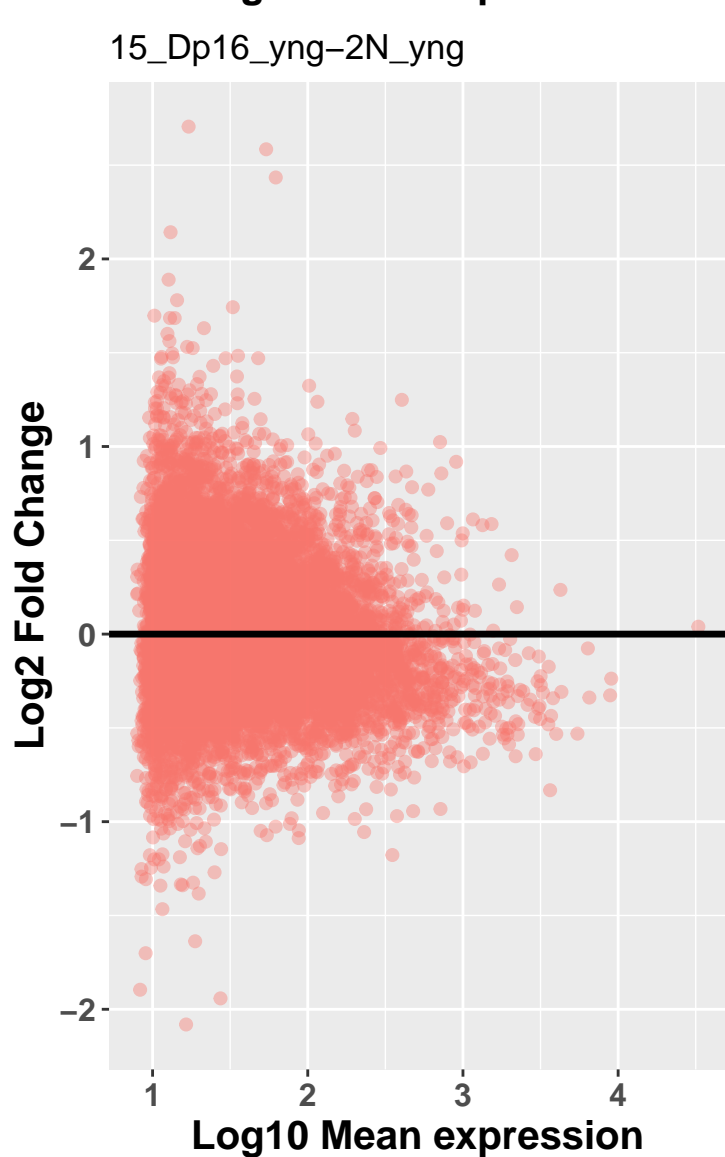


pass thresh
● FALSE
● TRUE

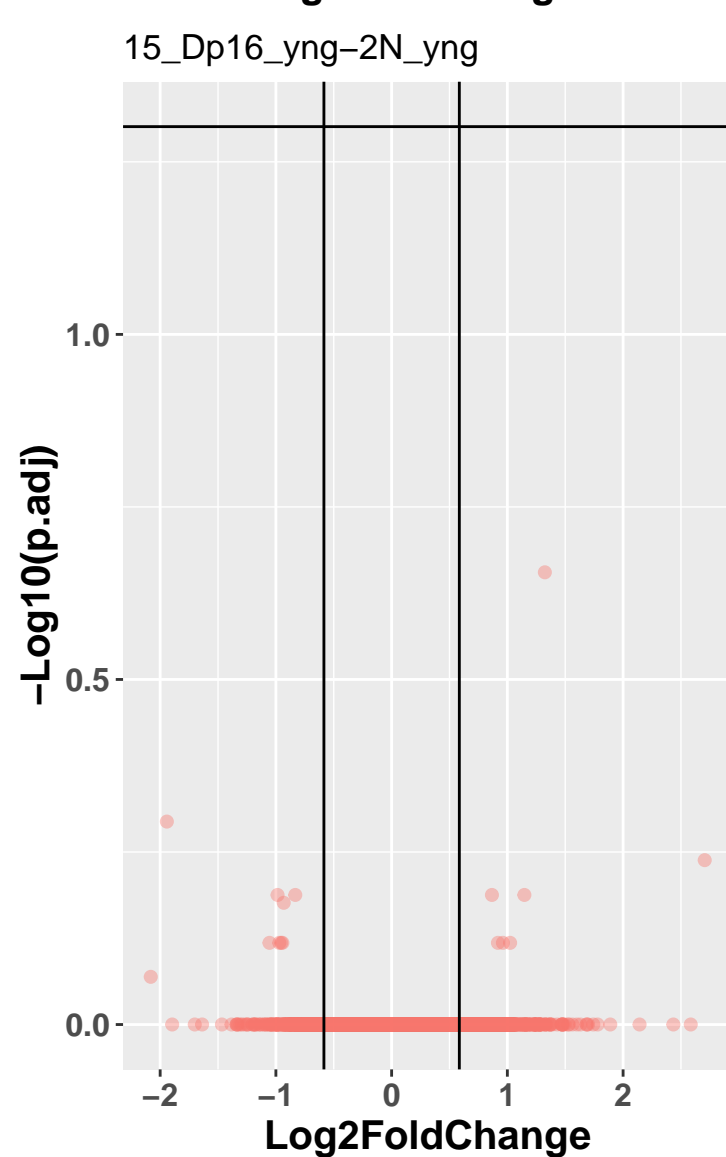


pass thresh
● FALSE
● TRUE

	Cut	Count
1	0.001	9
2	0.01	60
3	0.025	101
4	0.05	222
5	0.1	435
6	0.2	807
7	0.3	993
8	0.4	1065
9	0.5	1069



pass thresh
● FALSE



pass thresh
● FALSE

	Cut	Count
1	0.001	0
2	0.01	0
3	0.025	0
4	0.05	0
5	0.1	0
6	0.2	0
7	0.3	1
8	0.4	1
9	0.5	1