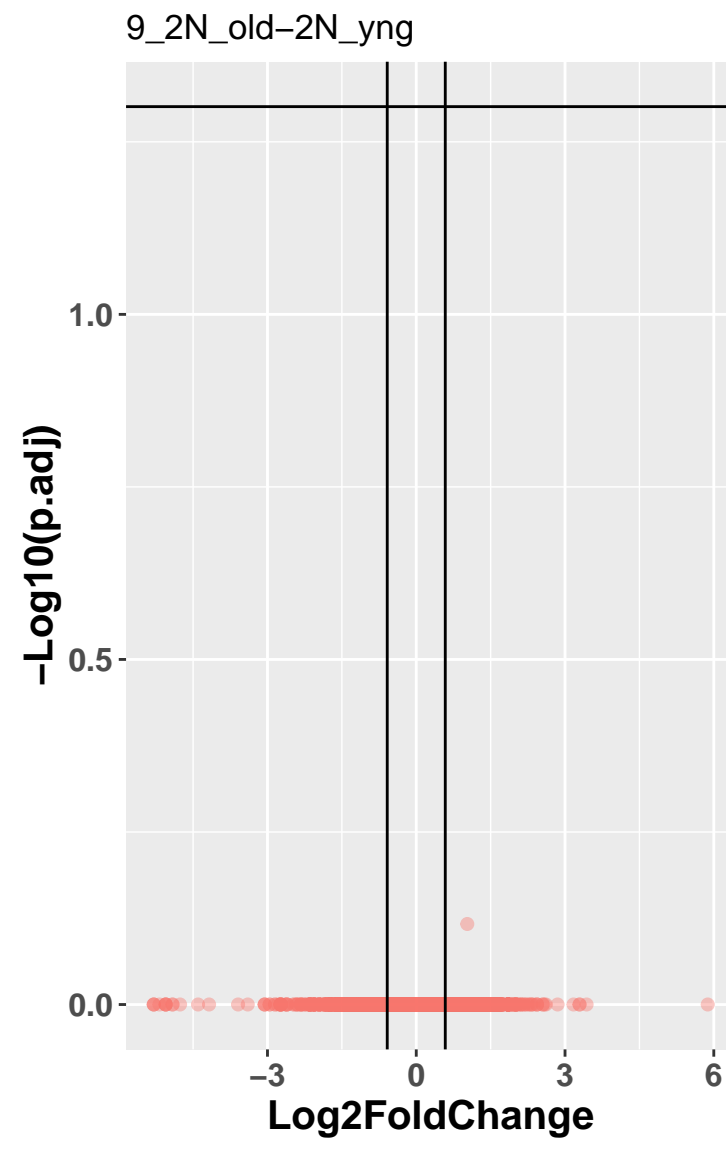
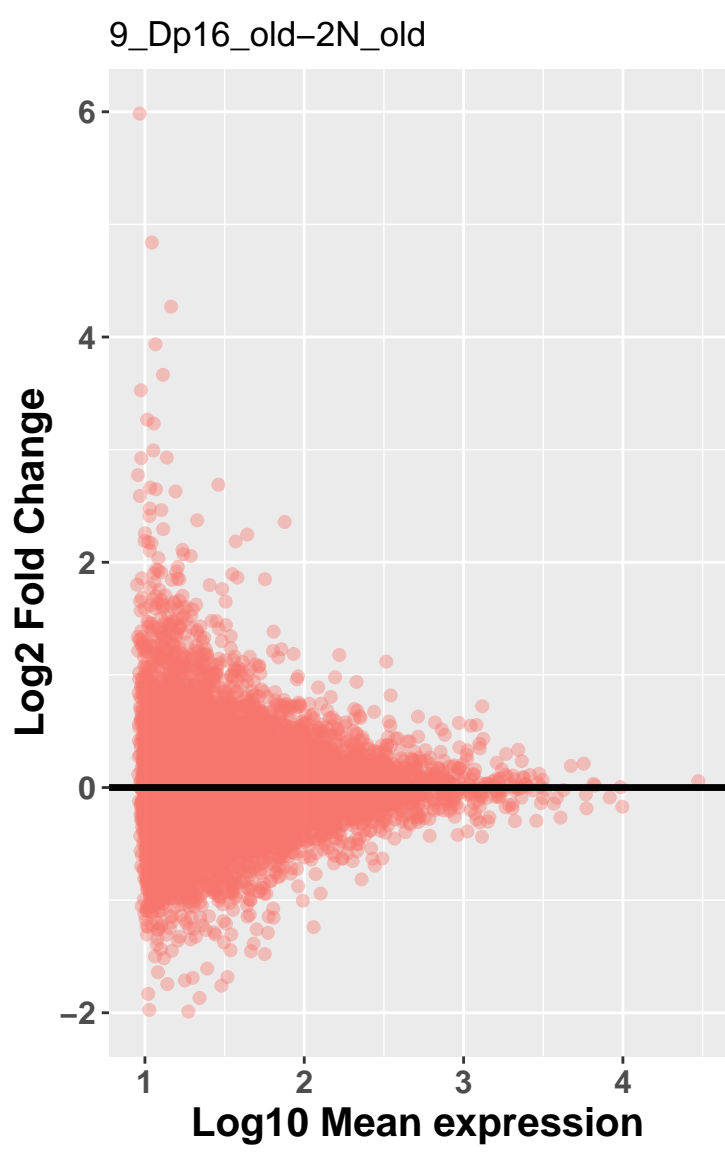


pass thresh
● FALSE

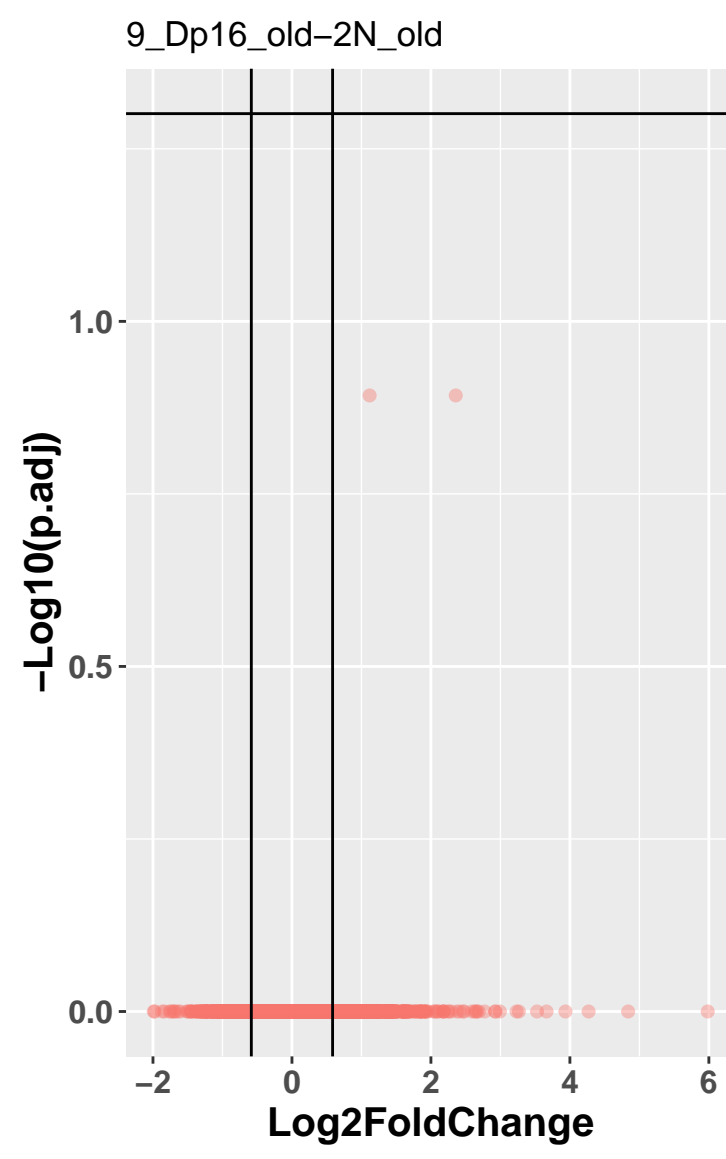


pass thresh
● FALSE

	Cut	Count
1	0.001	0
2	0.01	0
3	0.025	0
4	0.05	0
5	0.1	0
6	0.2	0
7	0.3	0
8	0.4	0
9	0.5	0

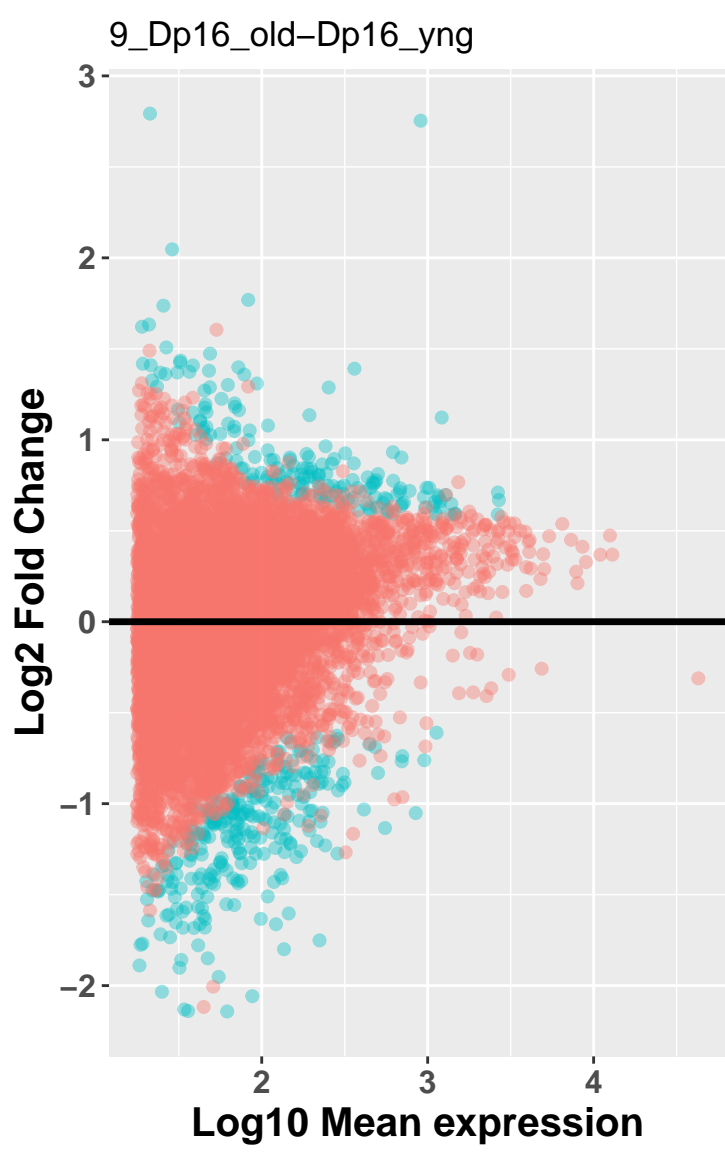


pass thresh
● FALSE

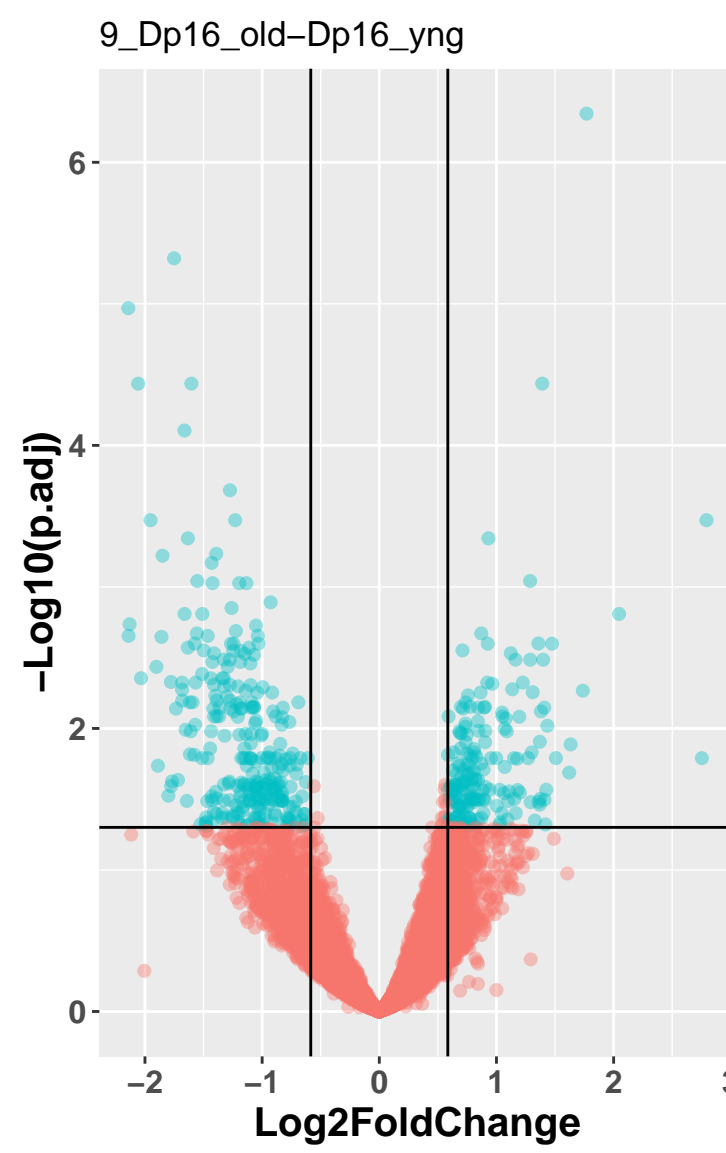


pass thresh
● FALSE

	Cut	Count
1	0.001	0
2	0.01	0
3	0.025	0
4	0.05	0
5	0.1	0
6	0.2	2
7	0.3	2
8	0.4	2
9	0.5	2

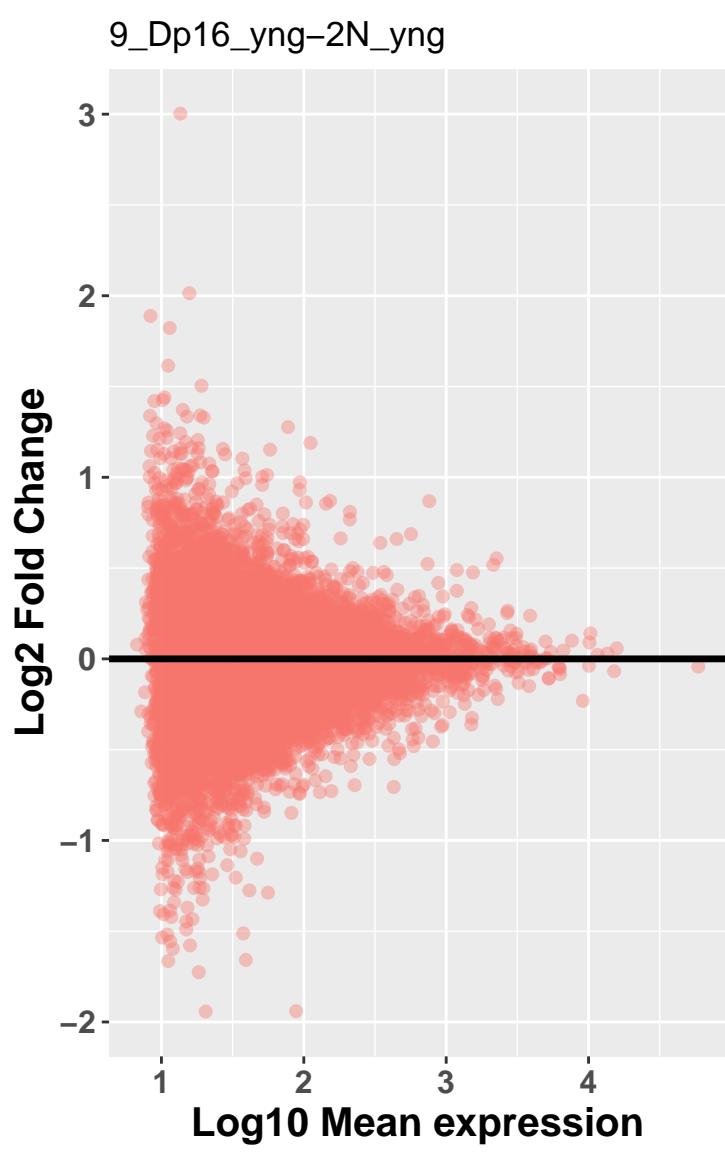


pass thresh
● FALSE
● TRUE

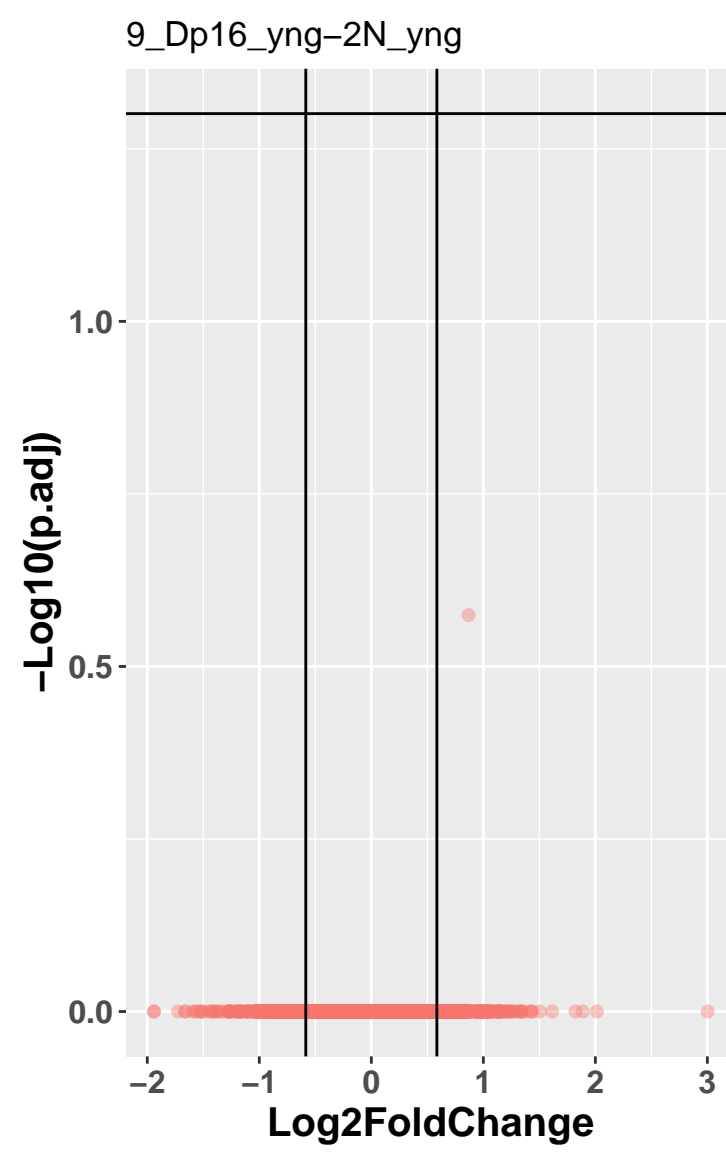


pass thresh
● FALSE
● TRUE

	Cut	Count
1	0.001	21
2	0.01	141
3	0.025	257
4	0.05	459
5	0.1	826
6	0.2	1268
7	0.3	1593
8	0.4	1774
9	0.5	1824



pass thresh
● FALSE



pass thresh
● FALSE

	Cut	Count
1	0.001	0
2	0.01	0
3	0.025	0
4	0.05	0
5	0.1	0
6	0.2	0
7	0.3	1
8	0.4	1
9	0.5	1