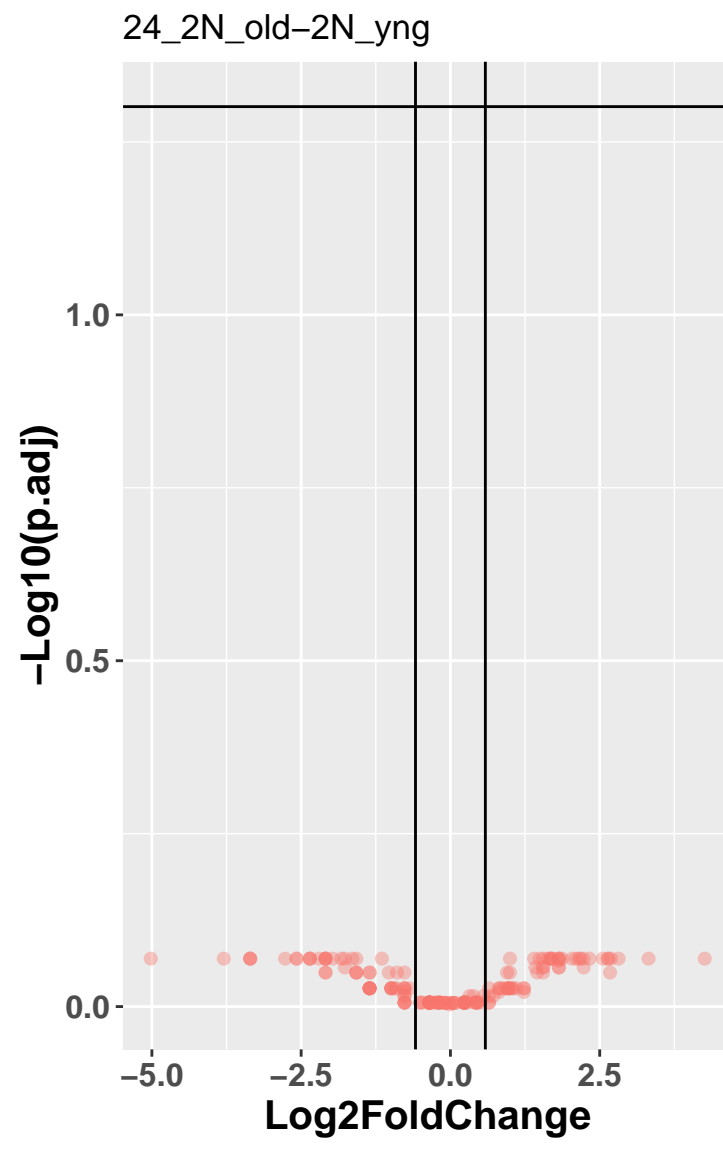
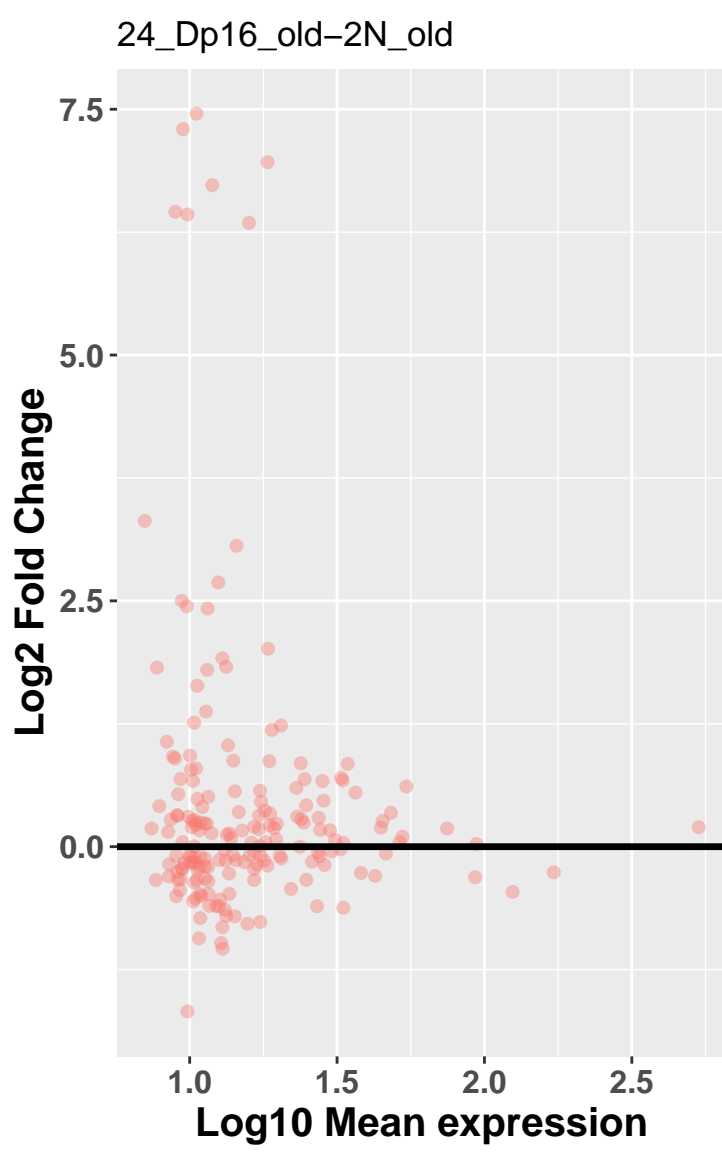


pass thresh
● FALSE

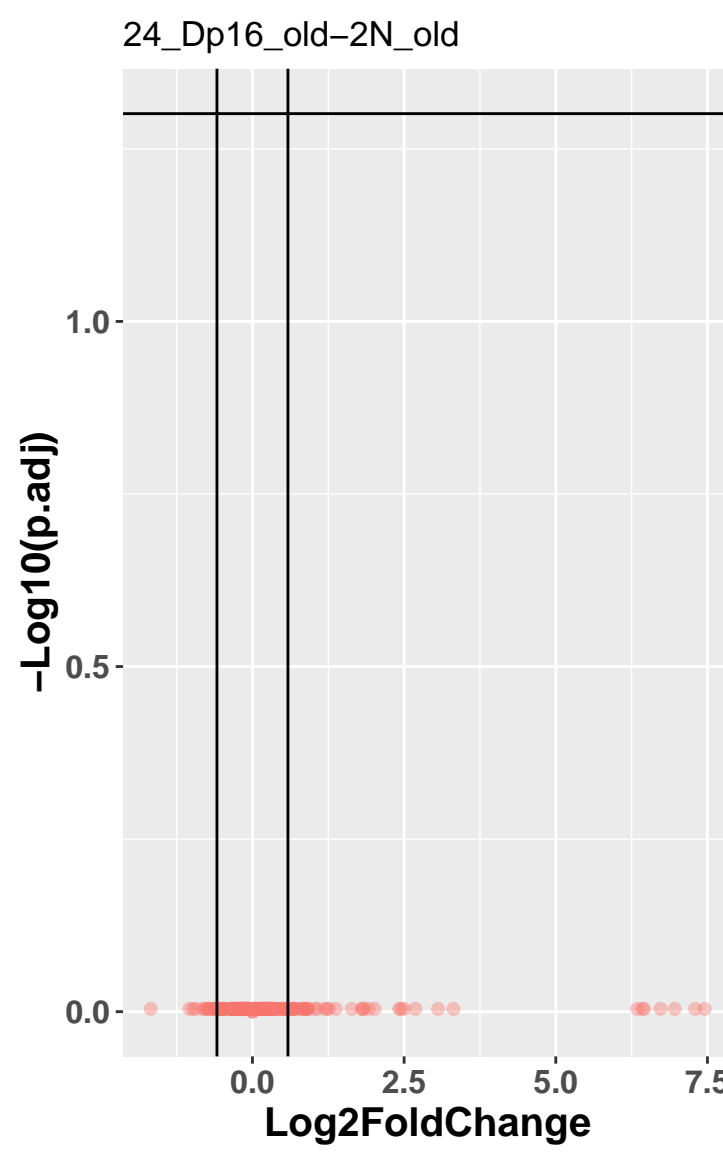


pass thresh
● FALSE

	Cut	Count
1	0.001	0
2	0.01	0
3	0.025	0
4	0.05	0
5	0.1	0
6	0.2	0
7	0.3	0
8	0.4	0
9	0.5	0

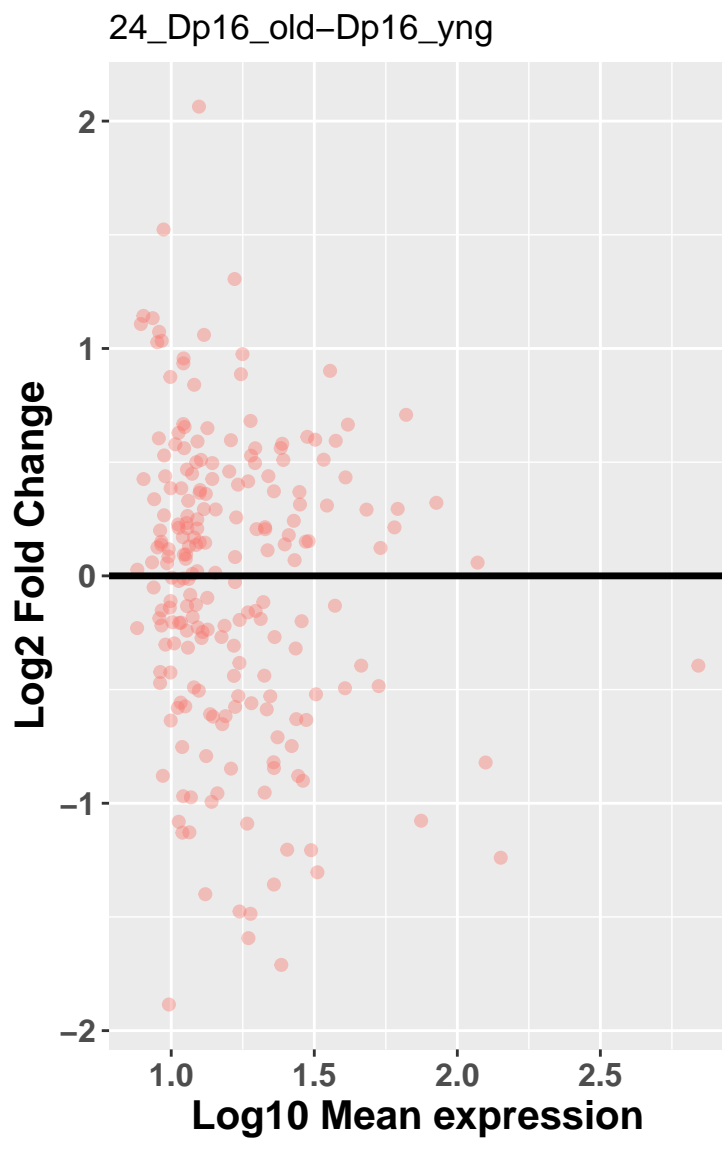


pass thresh
● FALSE

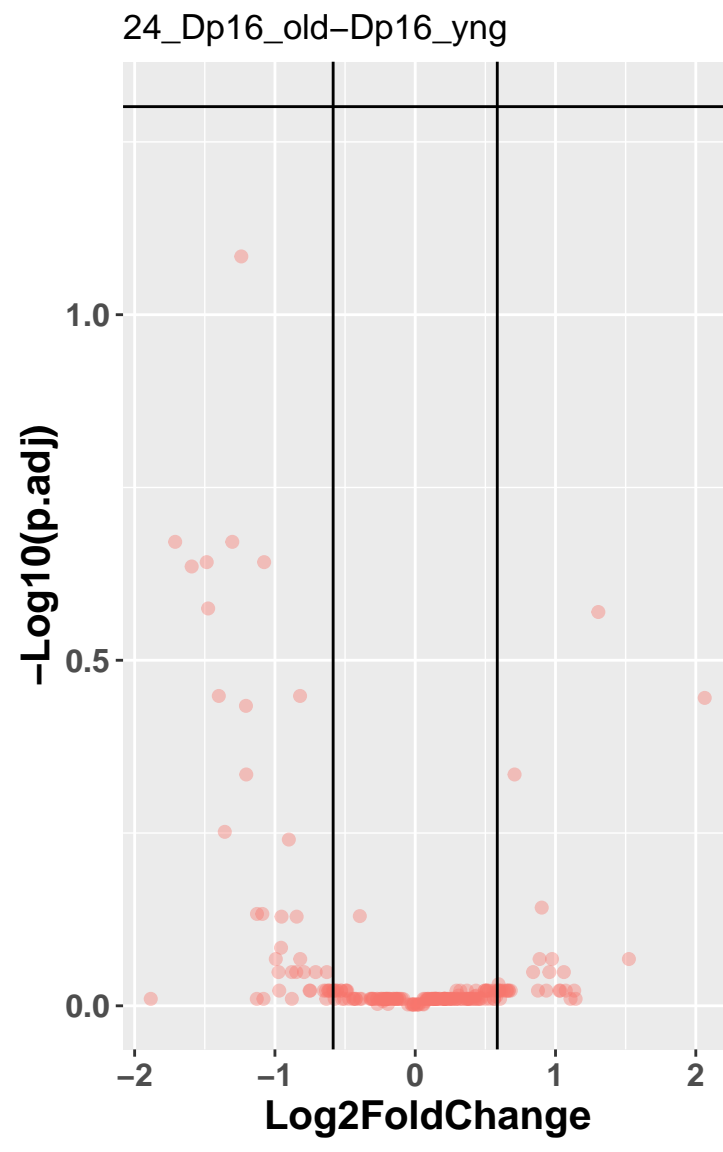


pass thresh
● FALSE

	Cut	Count
1	0.001	0
2	0.01	0
3	0.025	0
4	0.05	0
5	0.1	0
6	0.2	0
7	0.3	0
8	0.4	0
9	0.5	0

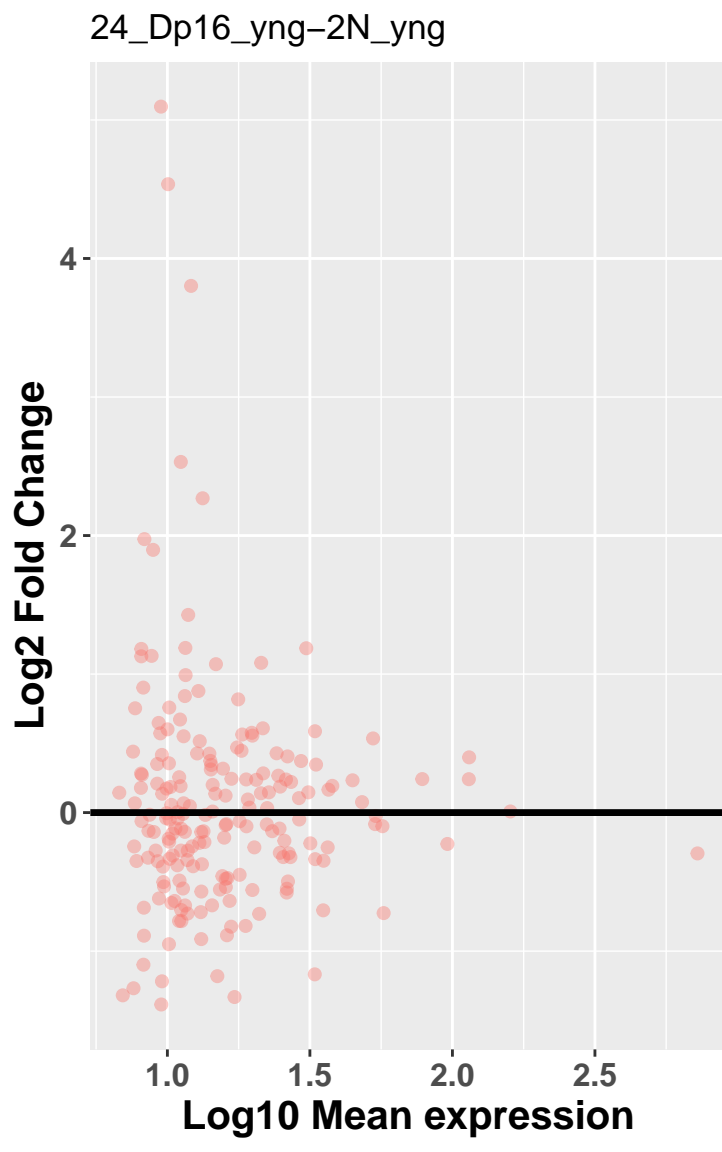


pass thresh
● FALSE

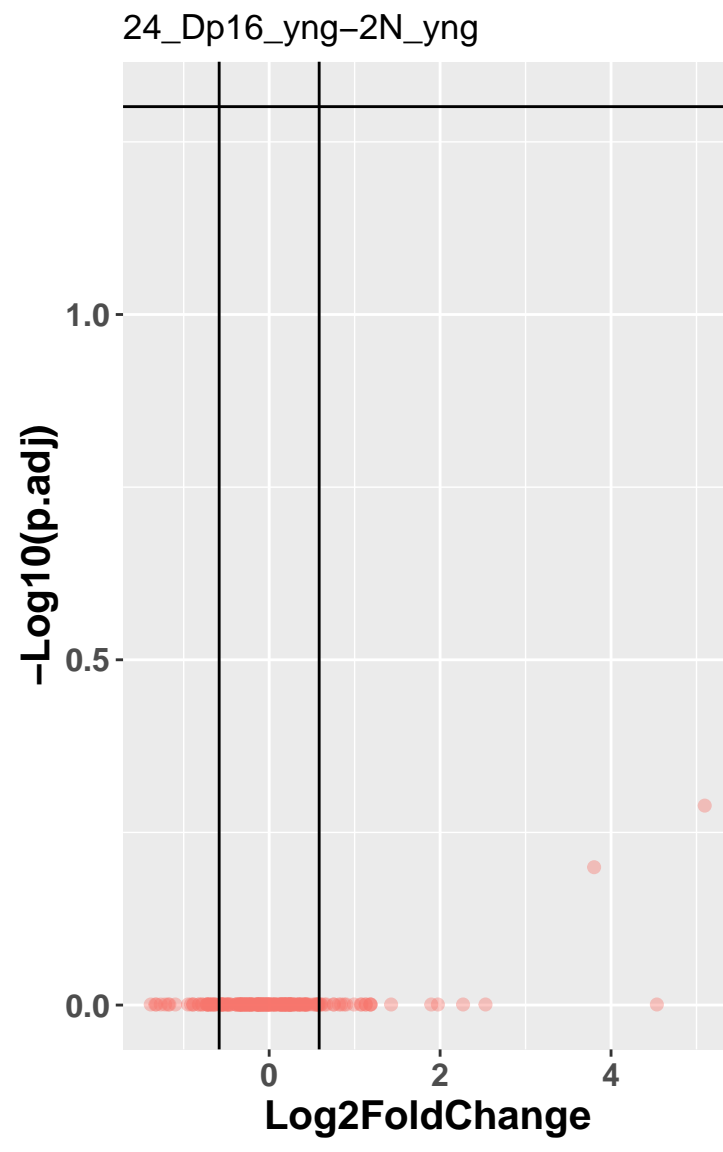


pass thresh
● FALSE

	Cut	Count
1	0.001	0
2	0.01	0
3	0.025	0
4	0.05	0
5	0.1	1
6	0.2	1
7	0.3	8
8	0.4	12
9	0.5	14



pass thresh
● FALSE



pass thresh
● FALSE

	Cut	Count
1	0.001	0
2	0.01	0
3	0.025	0
4	0.05	0
5	0.1	0
6	0.2	0
7	0.3	0
8	0.4	0
9	0.5	0