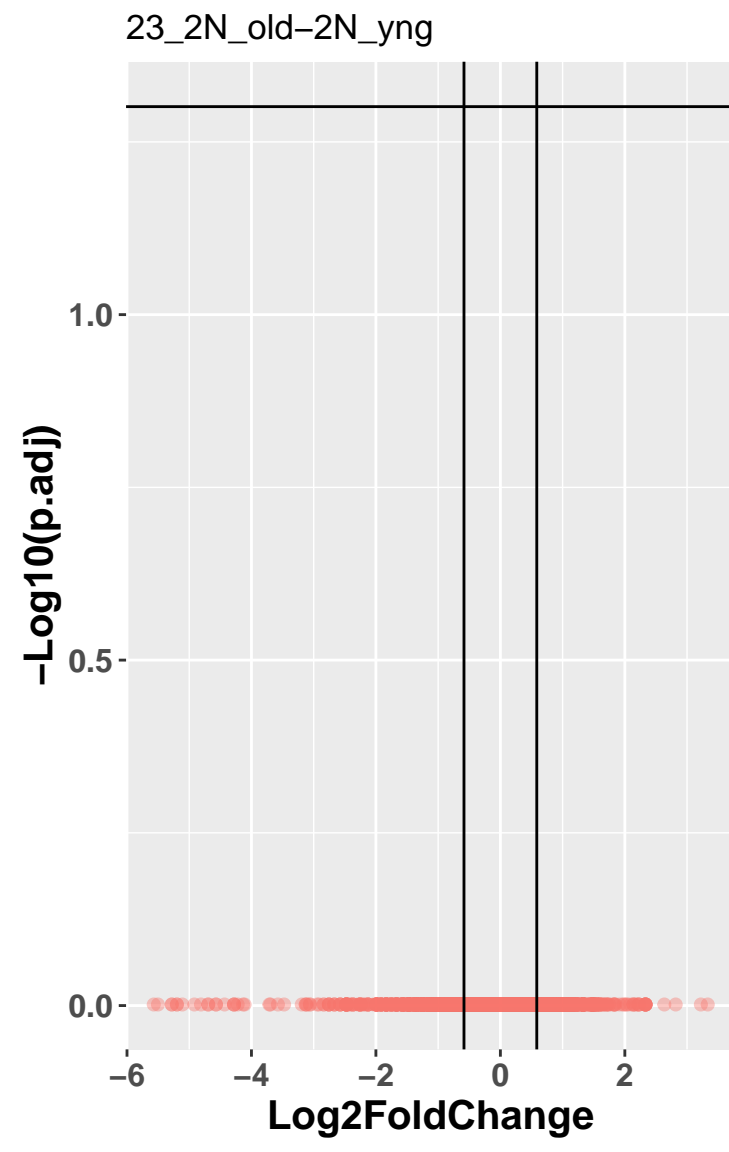


pass thresh
● FALSE

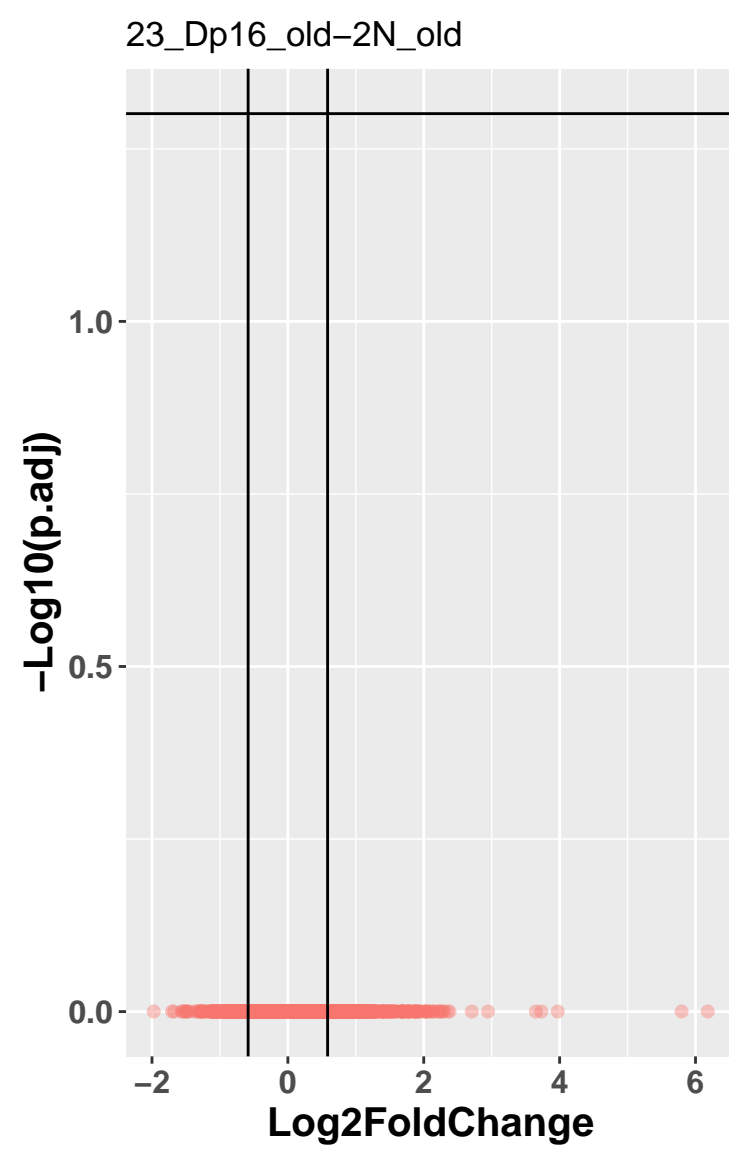


pass thresh
● FALSE

	Cut	Count
1	0.001	0
2	0.01	0
3	0.025	0
4	0.05	0
5	0.1	0
6	0.2	0
7	0.3	0
8	0.4	0
9	0.5	0

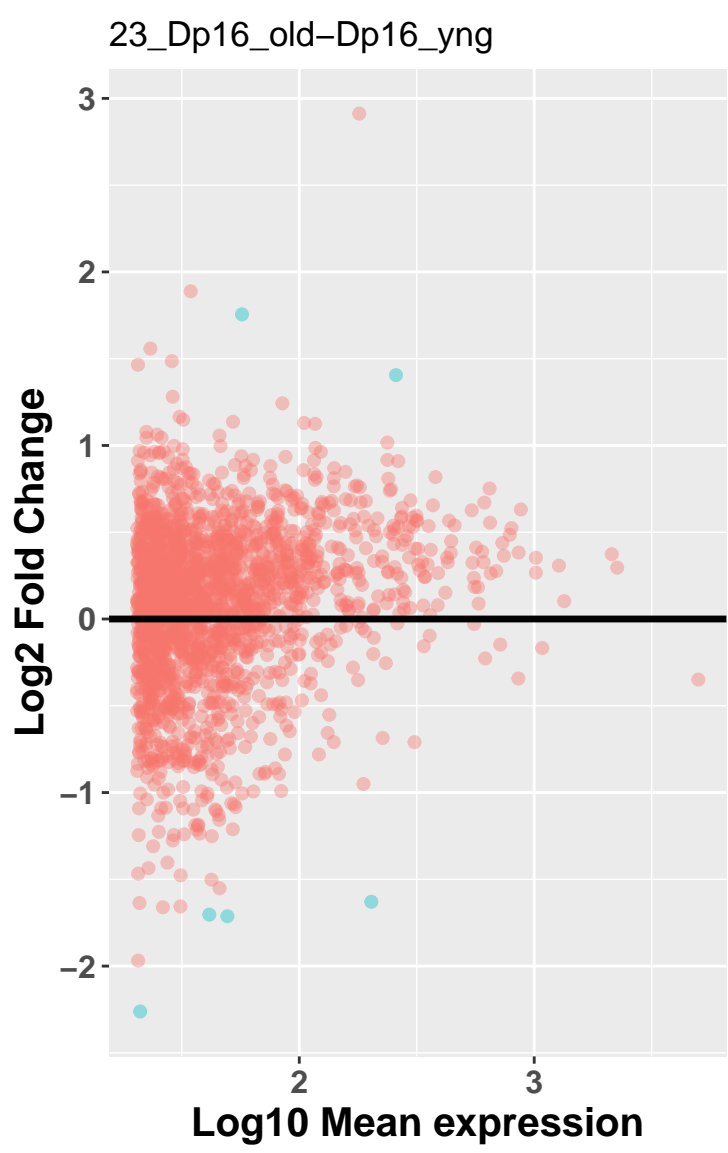


pass thresh
● FALSE

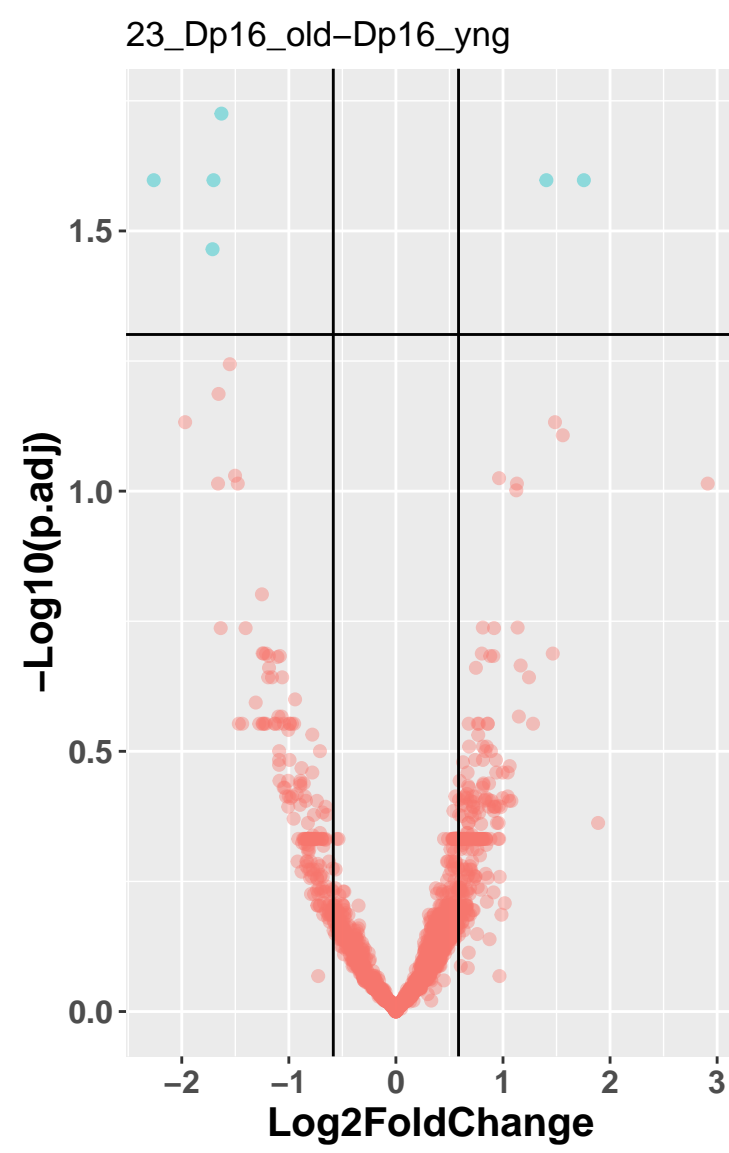


pass thresh
● FALSE

	Cut	Count
1	0.001	0
2	0.01	0
3	0.025	0
4	0.05	0
5	0.1	0
6	0.2	0
7	0.3	0
8	0.4	0
9	0.5	0

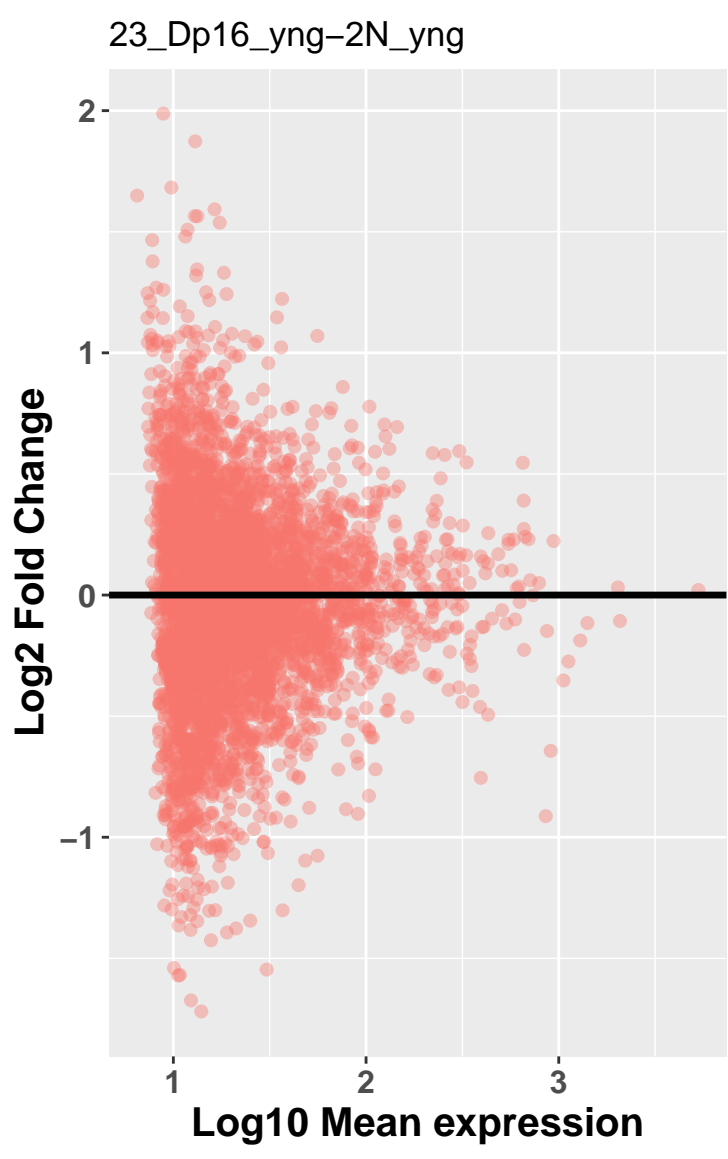


pass thresh
● FALSE
● TRUE

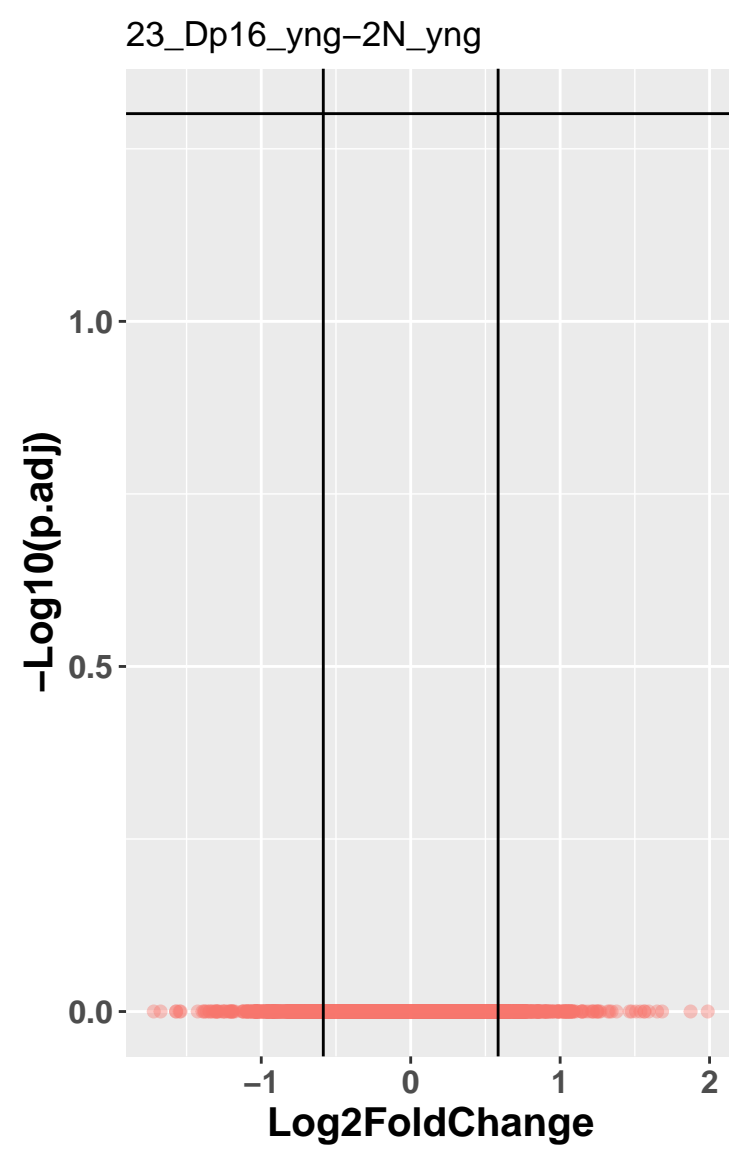


pass thresh
● FALSE
● TRUE

	Cut	Count
1	0.001	0
2	0.01	0
3	0.025	1
4	0.05	6
5	0.1	18
6	0.2	24
7	0.3	70
8	0.4	132
9	0.5	250



pass thresh
● FALSE



pass thresh
● FALSE

	Cut	Count
1	0.001	0
2	0.01	0
3	0.025	0
4	0.05	0
5	0.1	0
6	0.2	0
7	0.3	0
8	0.4	0
9	0.5	0