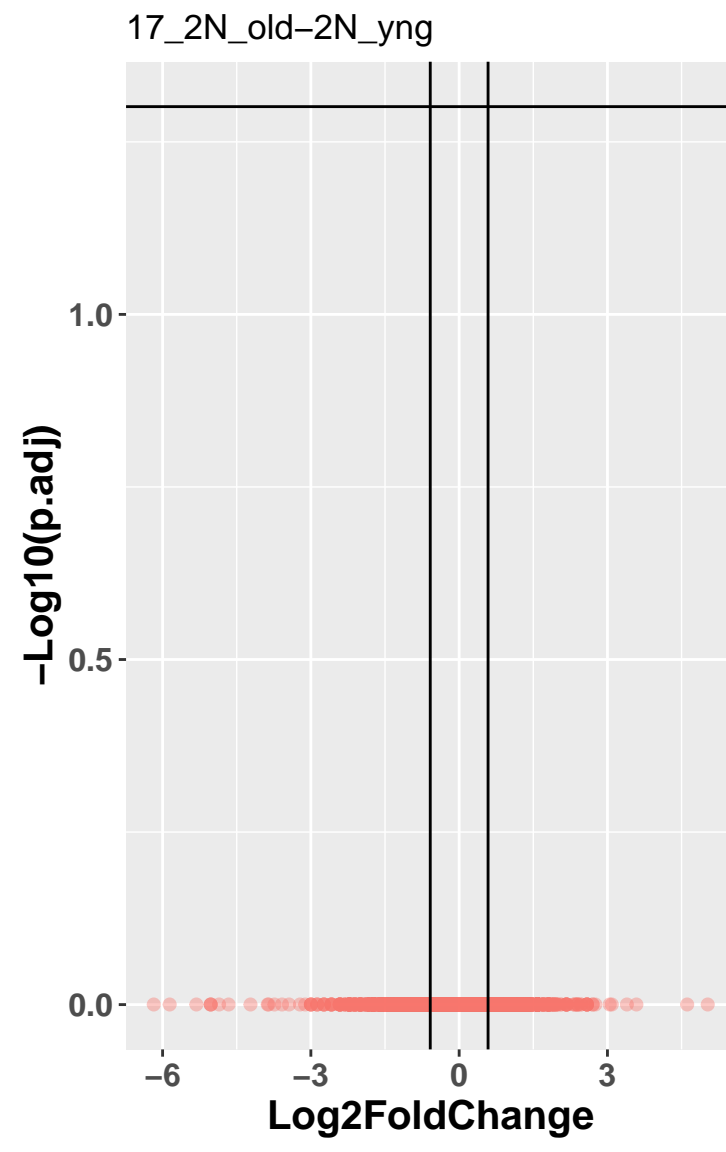
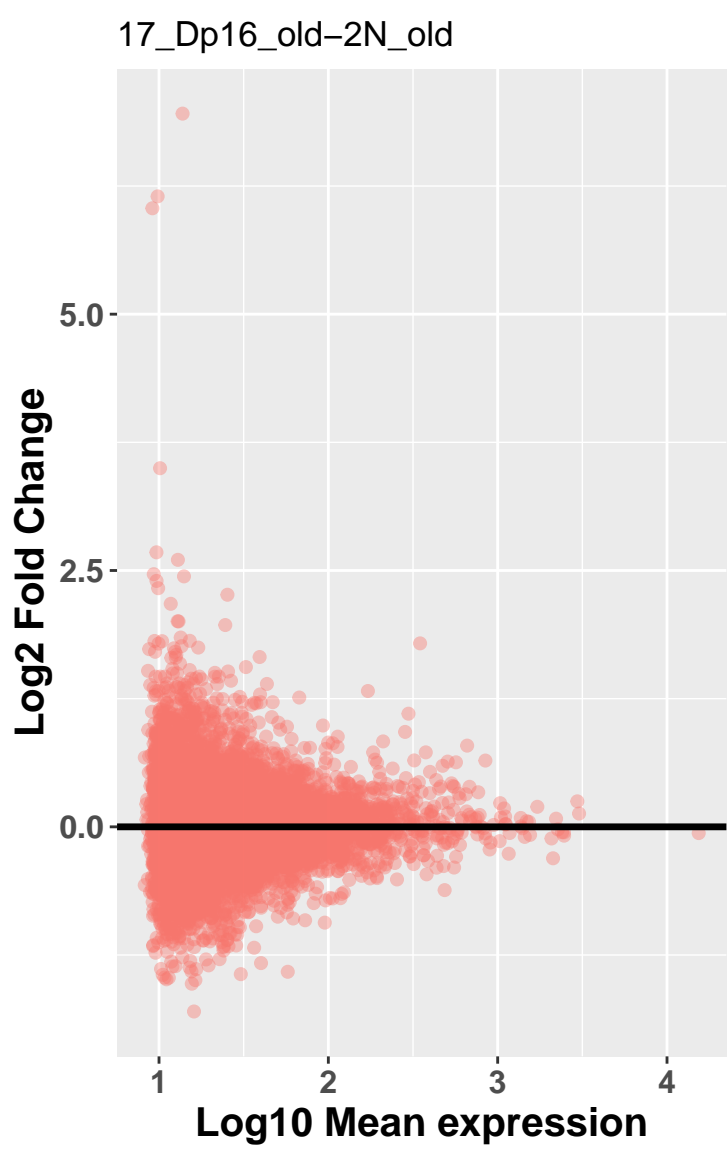


pass thresh
● FALSE

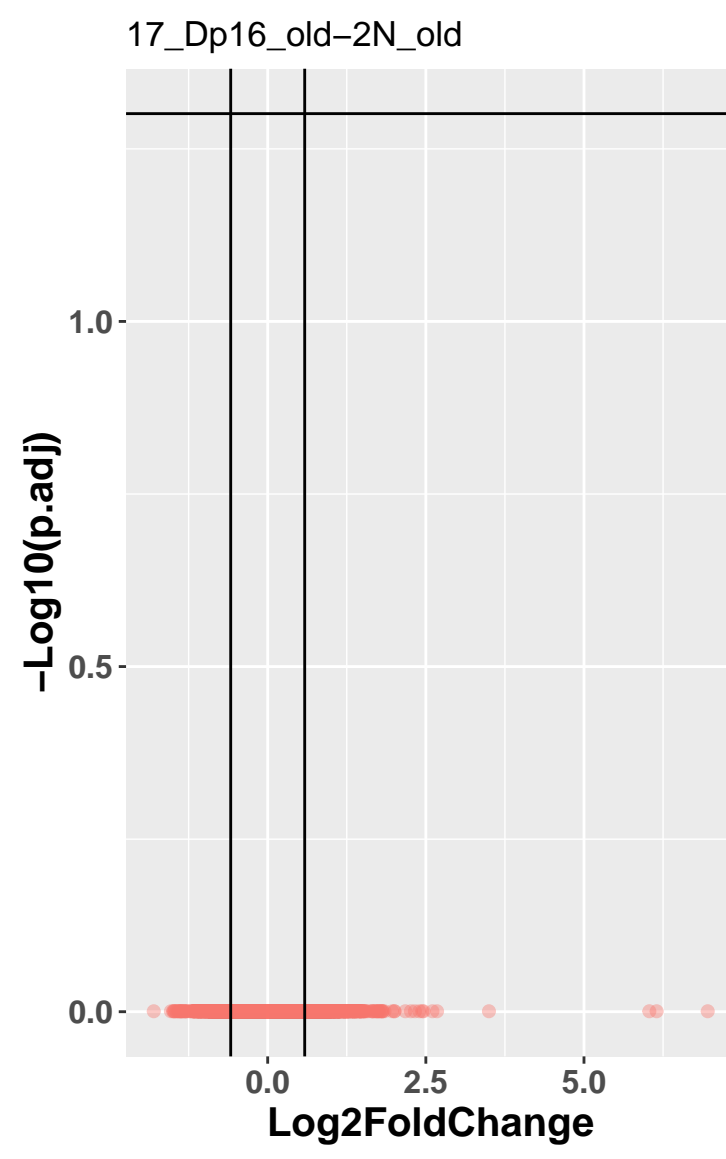


pass thresh
● FALSE

	Cut	Count
1	0.001	0
2	0.01	0
3	0.025	0
4	0.05	0
5	0.1	0
6	0.2	0
7	0.3	0
8	0.4	0
9	0.5	0

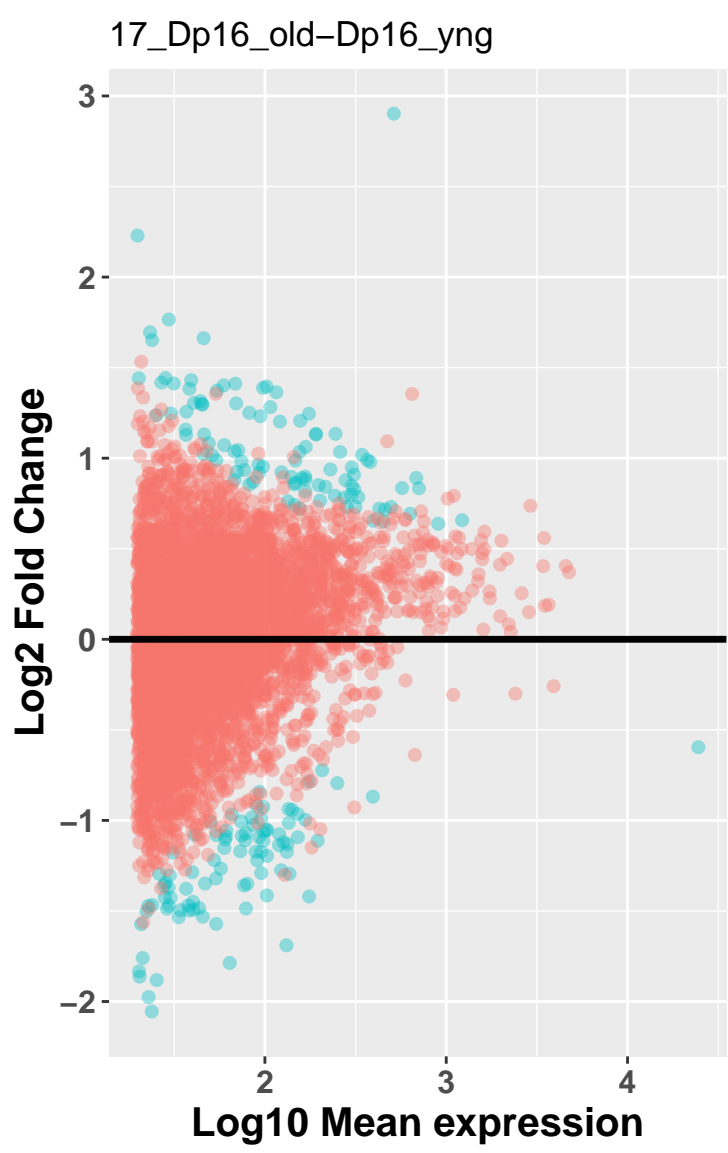


pass thresh
● FALSE

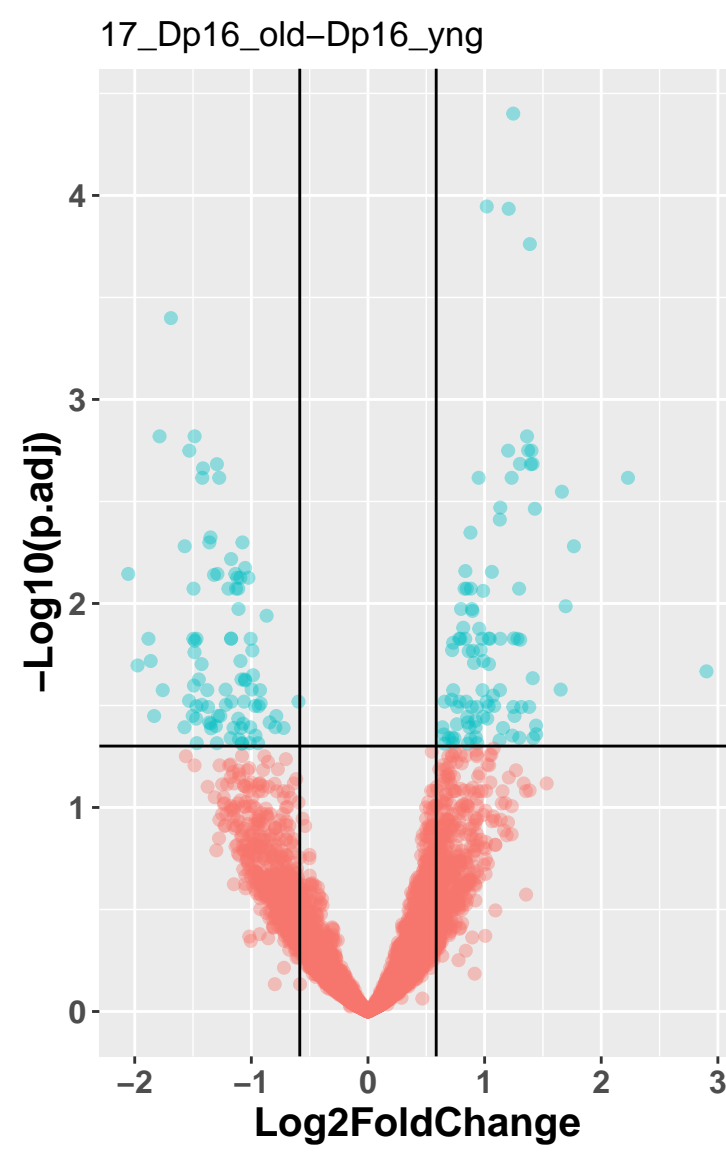


pass thresh
● FALSE

	Cut	Count
1	0.001	0
2	0.01	0
3	0.025	0
4	0.05	0
5	0.1	0
6	0.2	0
7	0.3	0
8	0.4	0
9	0.5	0



pass thresh
● FALSE
● TRUE

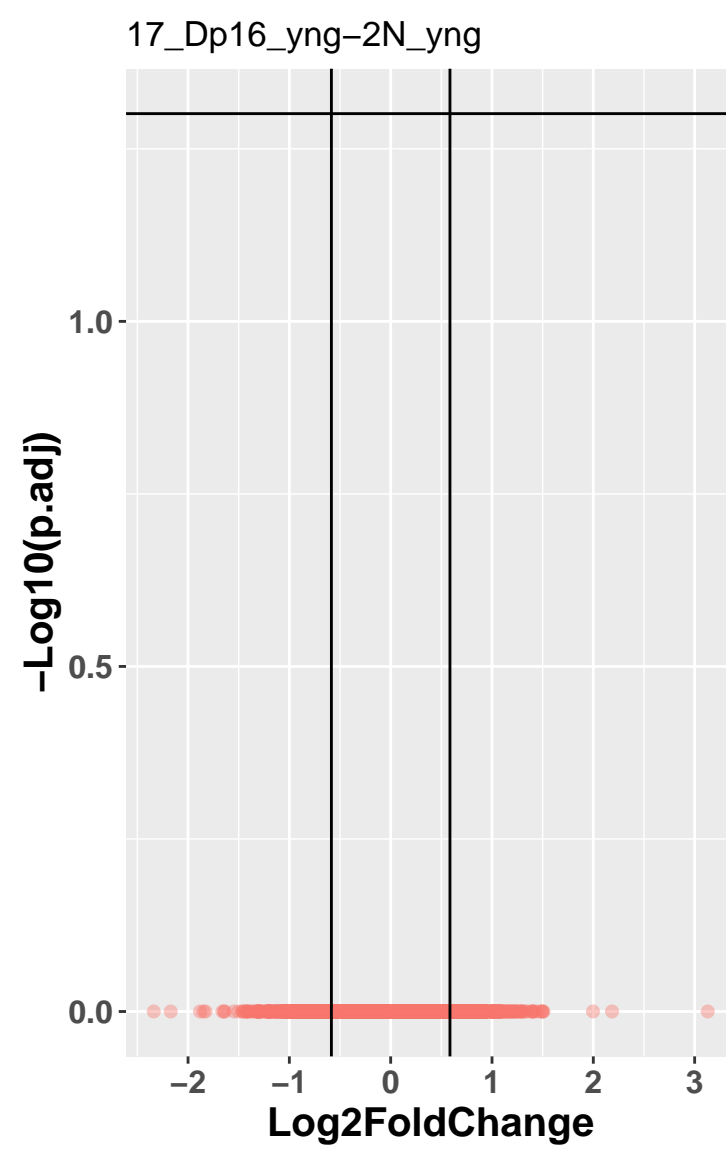


pass thresh
● FALSE
● TRUE

	Cut	Count
1	0.001	5
2	0.01	52
3	0.025	98
4	0.05	188
5	0.1	322
6	0.2	581
7	0.3	872
8	0.4	1038
9	0.5	1130



pass thresh
● FALSE



pass thresh
● FALSE

	Cut	Count
1	0.001	0
2	0.01	0
3	0.025	0
4	0.05	0
5	0.1	0
6	0.2	0
7	0.3	0
8	0.4	0
9	0.5	0